

What You Told Us

- Clearly mark edges of boardwalk adjacent to path **(65% Yes, 12% No)**
 - Add seating and lighting to the boardwalk. **(72% Yes, 14% No)**
 - Widen pathway by removing the lower parts of the terrace. **(67% Yes, 15% No)**
 - Greater support for relocating the cherry trees to a centre median **(67% Yes, 19% No)** than for keeping the trees in their current location and adding a raised walking surface. **(44% Yes, 35% No)**
- Re-use paving stones on walking path **(58% Yes, 15% No)** and install asphalt surface on cycling path between Alder Bay Walk and The Castings. **(62% Yes, 17% No)**
 - Reconfigure green space at the junction of The Castings and Island Park Walk to allow for a wider pathway. **(74% Yes, 11% No)**
 - Maintain existing path width and reconfigure layout along The Castings to separate walking and cycling paths with a median. **(81% Yes, 8% No)**
 - Remove vehicle access on The Castings between Island Park Walk and Forge Walk. **(56% Yes, 19% No)**

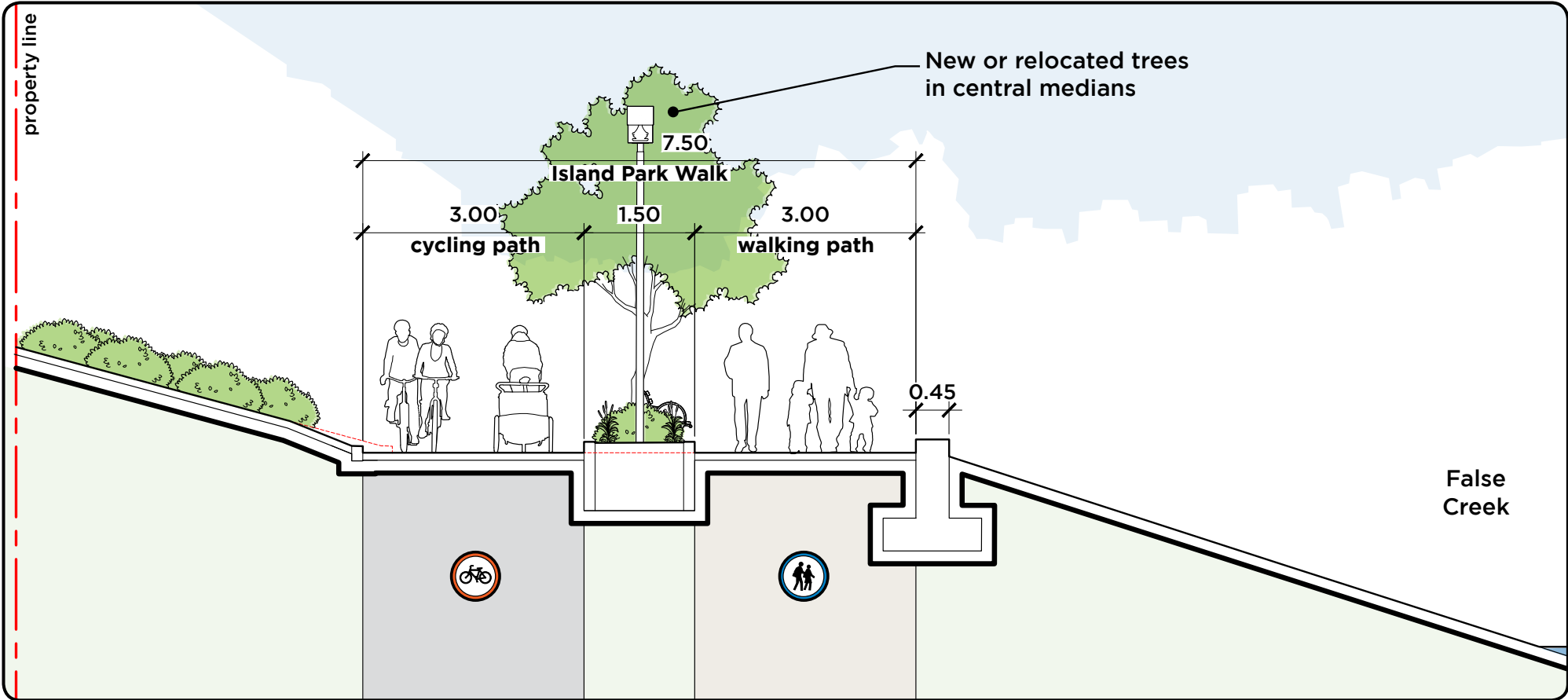
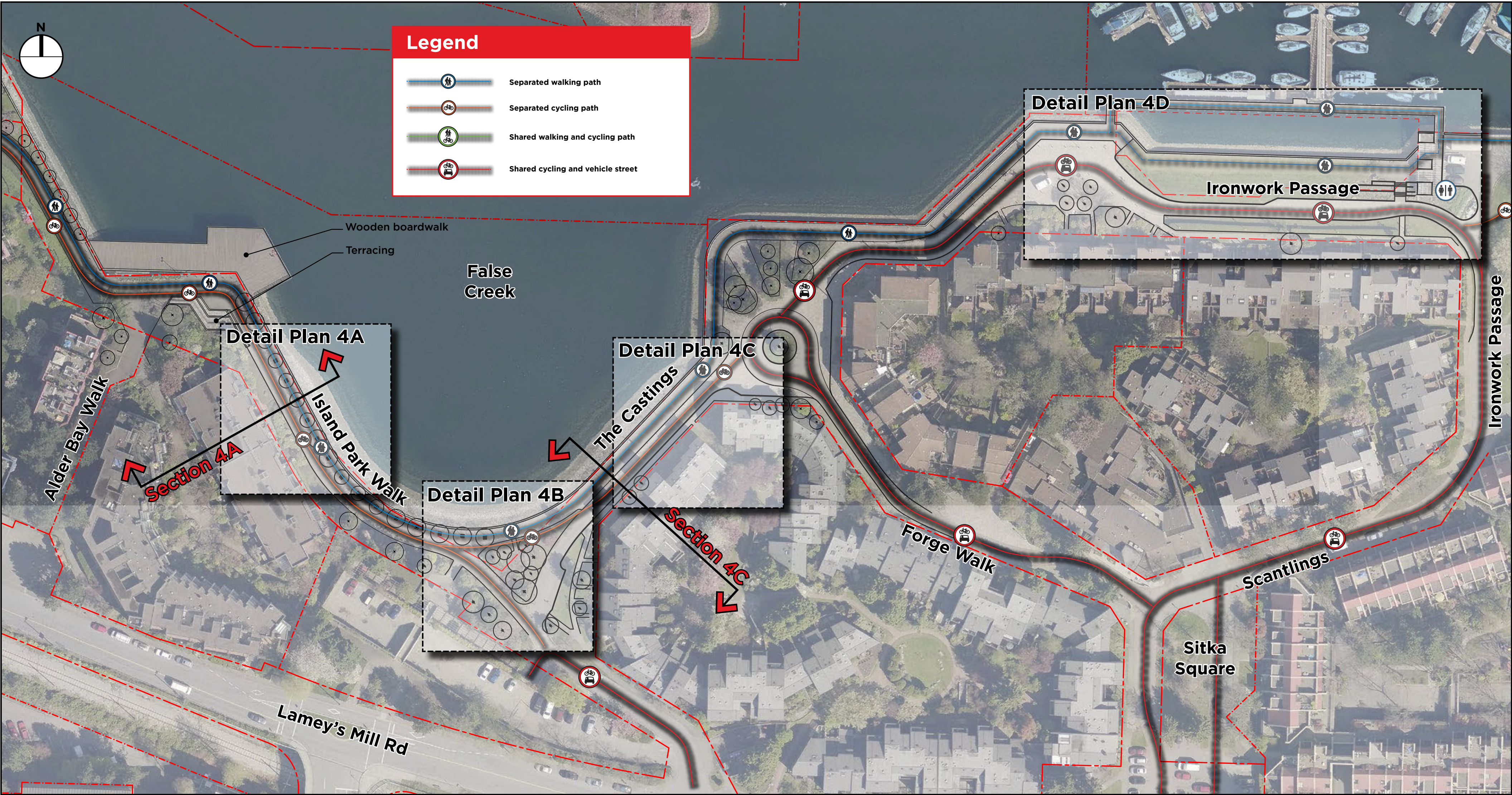
*Remainder of answers were “Unsure/don’t know”. Results are from October 2015 public open houses and online feedback survey.

Our Recommendation

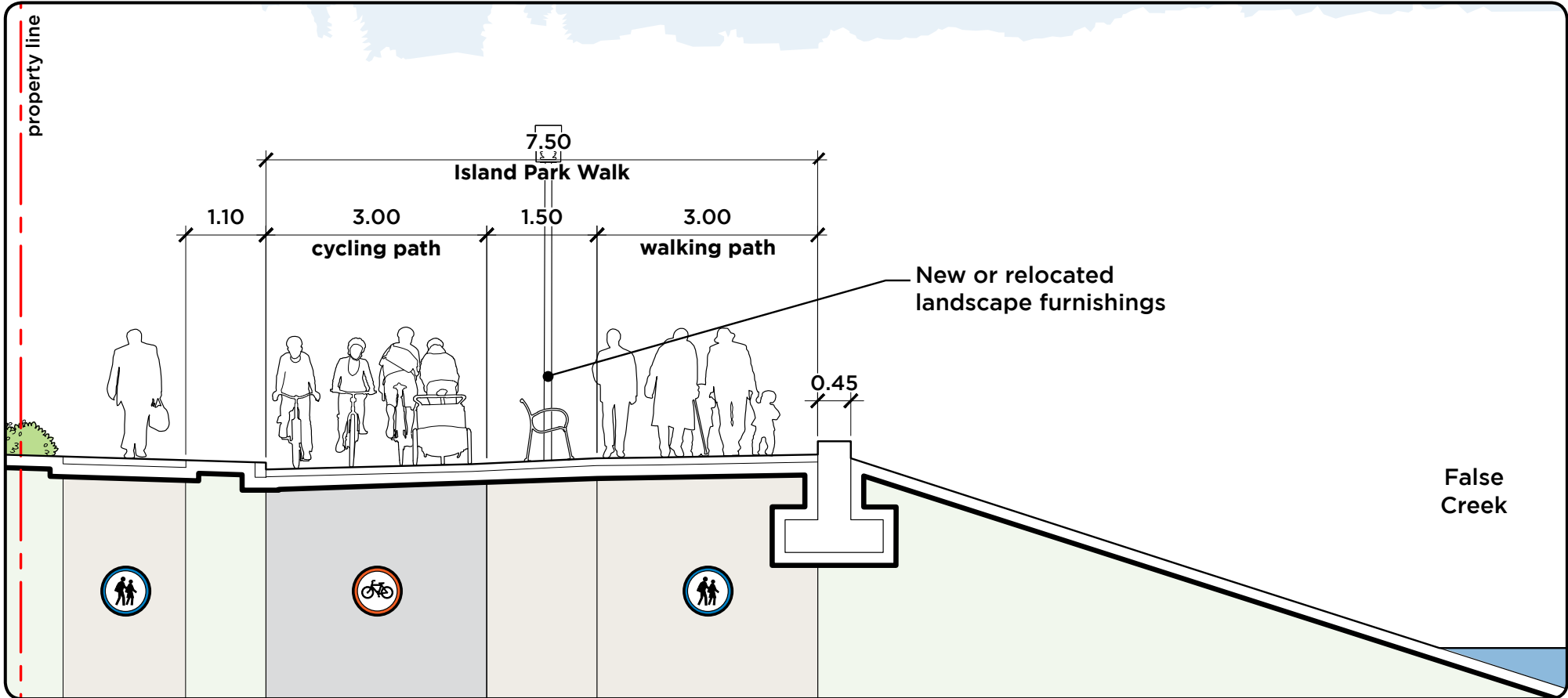
Recommended Solutions	Why?	When?
<p>Widen pathway along Island Park Walk between Alder Bay Walk and The Castings. Separate walking and cycling paths with a new centre median. See Detail Plan 4A, Board 4.2</p> <p>Key components of design:</p> <ul style="list-style-type: none">Path widened to 7.5m.New central median with replaced and relocated cherry trees.Bottom of terrace near Alder Bay Walk removed.Existing paving stones re-used on walking path.New asphalt surface on cycling path.	<p>The recommended design provides clear, separated, and unobstructed paths for walking and cycling. An alternate design option presented in October 2015 kept the trees in their current location with a raised walking surface.</p> <p>An independent arborist assessment concluded that the existing cherry trees are unlikely to survive relocation. New cherry trees will benefit from improved growing conditions in the new median.</p>	<p>Winter 2016/17</p>
<p>Reconfigure and expand the green space at the junction of The Castings and Island Park Walk to allow for a wider pathway. See Detail Plan 4B, Board 4.3</p> <p>Key components of design:</p> <ul style="list-style-type: none">Path widened to 5.0m adjacent to green space.2.5m walking path and 2.5m cycling path separated by paint.Exsting cherry tree grove retained and new trees added.Roadway closed and re-purposed for new green space and improved cycling connection to Bypass route.Emergency vehicle access maintained.	<p>A 5.0m path provides an additional 1.5m of path width while allowing the cherry trees to be retained.</p> <p>Shared space with vehicles increases the potential for conflicts between people walking, cycling, and driving.</p>	<p>2016</p>
<p>Reconfigure the path layout and create a median separating the walking and cycling paths along The Castings. See Detail Plan 4C, Board 4.3</p> <p>Key components of design:</p> <ul style="list-style-type: none">Existing 8.4m wide path maintained.3.0m walking path and 3.0m cycling path separated by 1.5m median with benches, lighting, and vegetation.Flagstone pavers replaced with new asphalt cycling path and grass boulevard.Emergency vehicle access maintained.	<p>The separation provided by the existing bollards and signage is unclear. Reconfiguration provides an opportunity to replace the flagstone pavers in this section with a more accessible surface.</p> <p>Shared space with vehicles increases the potential for conflicts between people walking, cycling, and driving.</p>	<p>2016</p>
Future Considerations	Why?	
<p>Improve the wooden boardwalk by marking the edges, and consider adding seating and lighting.</p> <p>Refer to Boards 4.2 and 4.3 for Sections and Detail Plans</p>	<p>After key recommendations are implemented, these improvements could enhance safety and usability of the boardwalk.</p>	

Our Recommendation

Refer to Board 4.3 for Detail Plans 4B and 4C

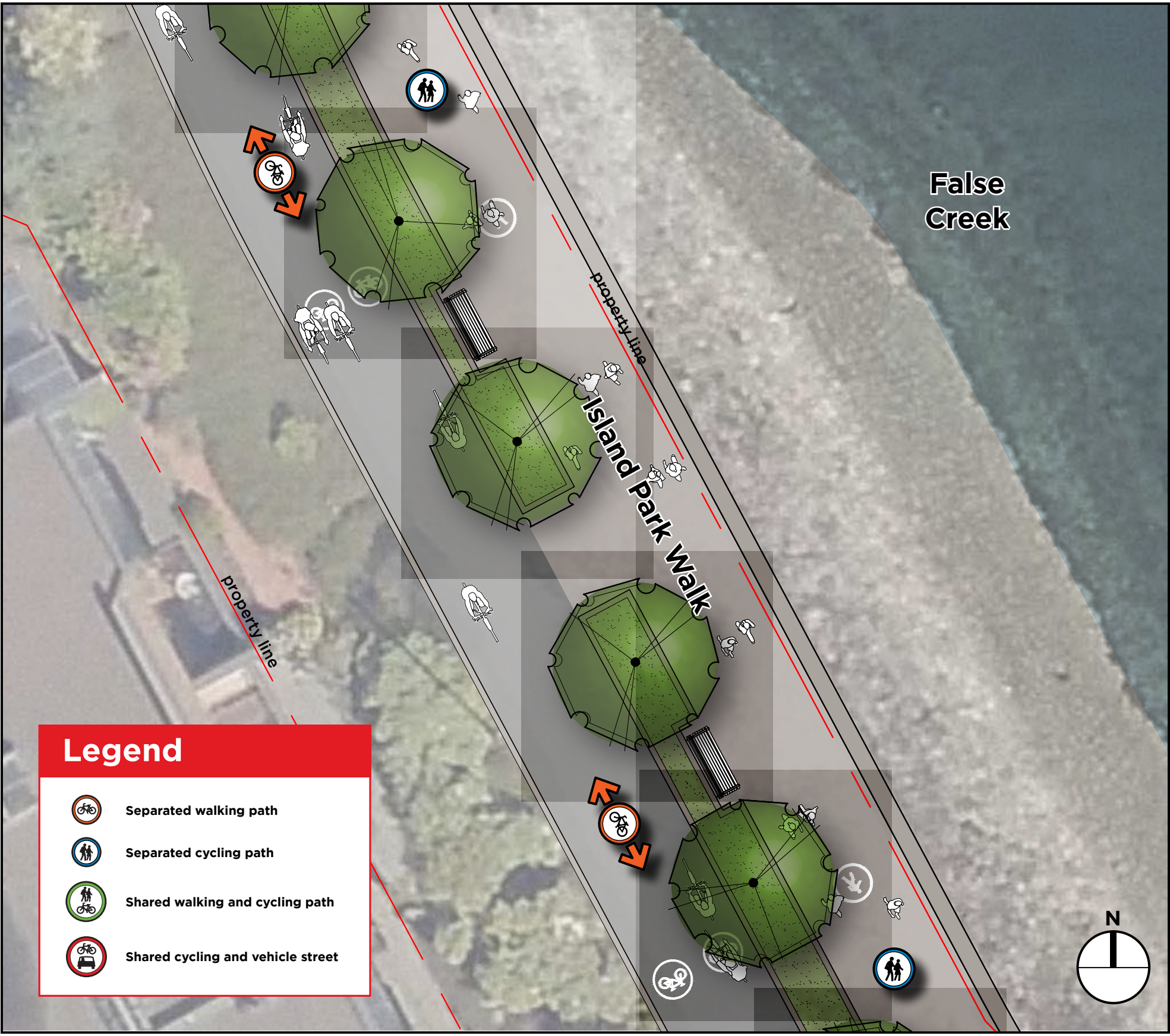


Section 4A



Section 4C

Detail Plan 4A

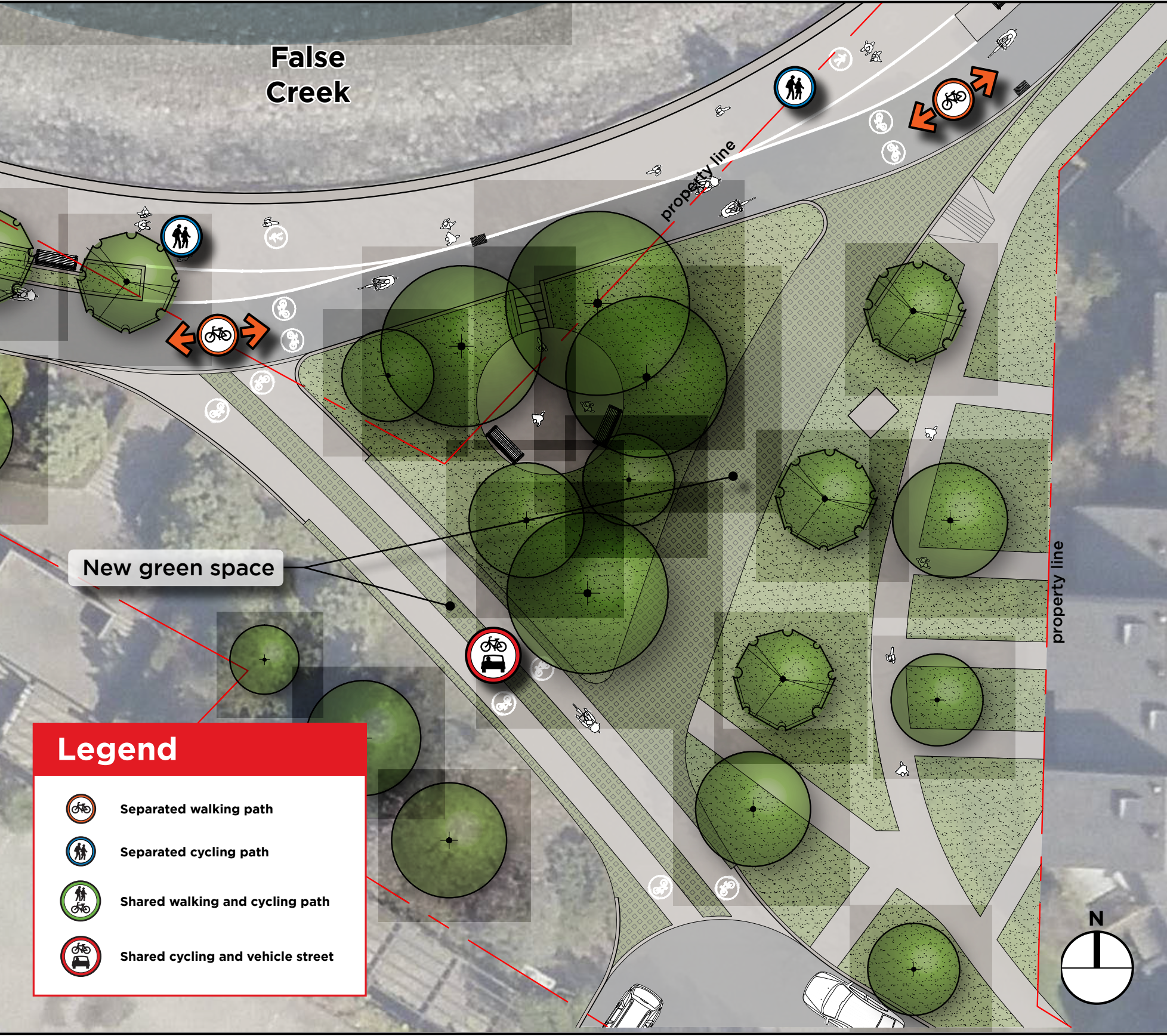


Widen pathway along Island Park Walk between Alder Bay Walk and The Castings. Separate walking and cycling paths with a new centre median.



Existing view, Island Park Walk between Alder Bay Walk and The Castings looking West

Detail Plan 4B



Reconfigure the green space at the junction of The Castings and Island Park Walk to allow for a wider pathway.



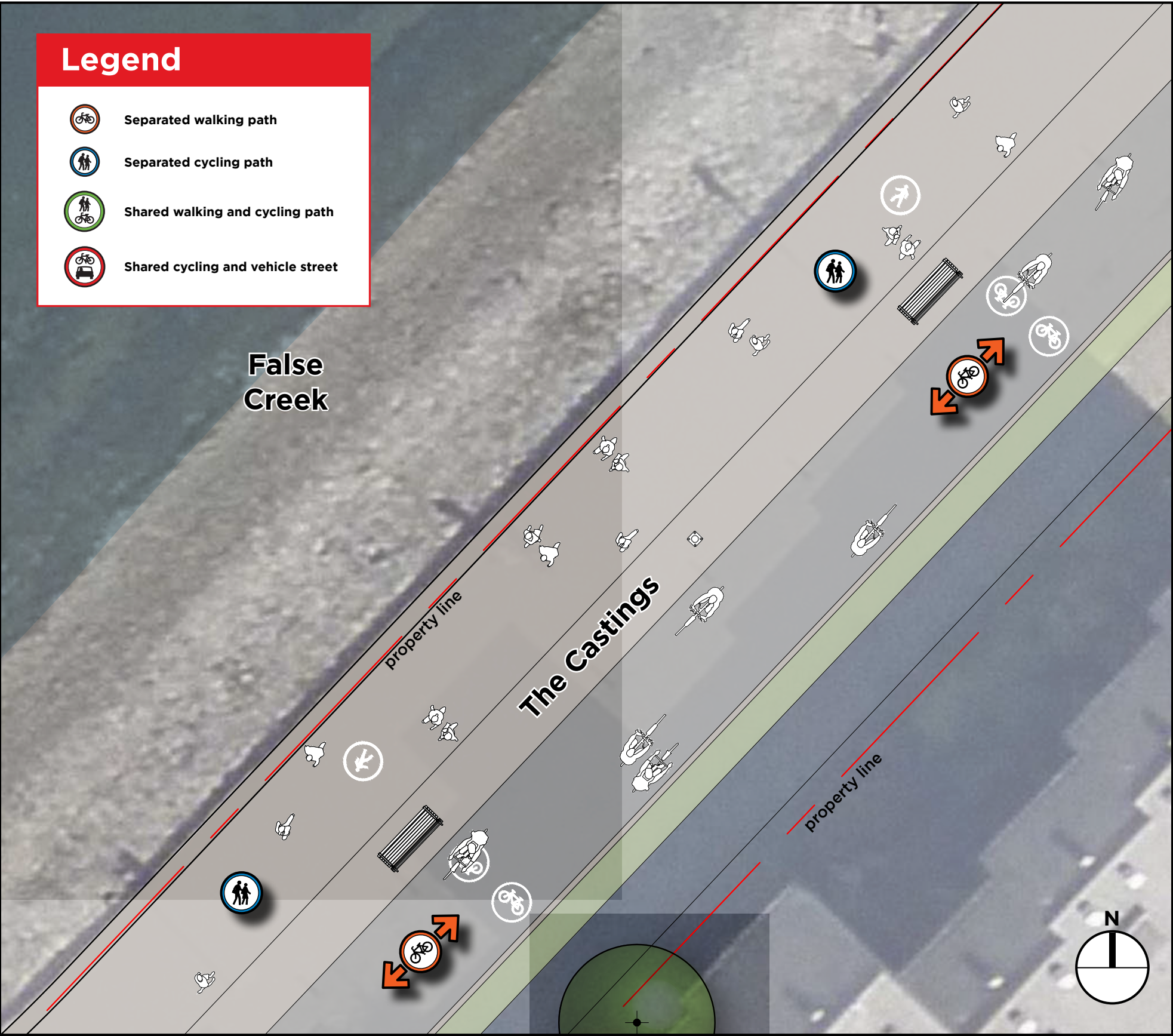
Existing view, Island Park Walk at The Castings looking East

Detail Plan 4C

Reconfigure the path layout and create a median separating the walking and cycling paths along The Castings. Replace surface on cycling path.



Existing view, Islands Park Walk between The Castings and Forge Walk looking Southwest



“Green space, shrubs and cherry trees are what makes South False Creek special.”

“I have always liked that the cherry trees provide a separate walking path, but that path is too narrow as it is.”

“The flagstones are unpleasant to ride a bike on, a tripping hazard for pedestrians, and unusable for people with scooters or wheelchairs.”

“If you make only one improvement, please fix the congestion at the triangular parkette near The Castings.”

“Subdued lighting on the boardwalk would be OK, but please no bright overhead lighting.”

What You Told Us

- Provide signage at the marina bridge. **(72% Yes, 10% No)**
 - Re-align cycling path to the south and move the seating area between the walking and cycling paths. **(63% Yes, 14% No)**
- Develop existing green space into a new walking path. **(61% Yes, 19% No)**
 - Provide a smoother paving surface through the section with flagstone pavers. **(64% Yes, 16% No)**

*Remainder of answers were “Unsure/don’t know”. Results are from October 2015 public open houses and online feedback survey.

Our Recommendation

Recommended Solutions	Why?	When?
Provide signage at entrances to the marina bridge indicating that it is open to the public as a walking path. See Detail Plan 4D, Below	The bridge is not well marked as a publicly accessible space.	2016
Future Considerations	Why?	
Work with adjacent stakeholders to make further improvements near the marina including: <ul style="list-style-type: none">• realigning the cycling path and relocating the seating area west of the marina; and• developing the existing green space into a new walking path.	These improvements require reconfiguration of utility buildings that serve the marina.	
Replace flagstone pavers with a smoother and more accessible surface treatment.	Extensive resurfacing is beyond the scope of this project and any decision on this will require further design work and public input.	

Detail Plan 4D

