

What You Told Us

- Re-route cycling path away from the marina loading area. **(64% Yes, 14% No)**
 - Widen pathway **(76% Yes, 11% No)** and separate with pavement markings and signage east of marina. **(84% Yes, 9% No)**
 - Re-route cycling path between the trees and community garden. **(54% Yes, 24% No)**
- Widen pathway adjacent to off-leash dog area **(77% Yes, 7% No)** and separate walking and cycling paths with a median and benches. **(84% Yes, 7% No)**
 - Install a barrier between cycling path and off-leash dog area. **(63% Yes, 18% No)**
 - Re-route cycling path along existing worn dirt path to Greenchain. **(58% Yes, 16% No)**
 - Maintain existing Segment 5 route, separating and widening where possible. **(56% Yes, 29% No)**

*Remainder of answers were “Unsure/don’t know”. Results are from October 2015 public open houses and online feedback survey.

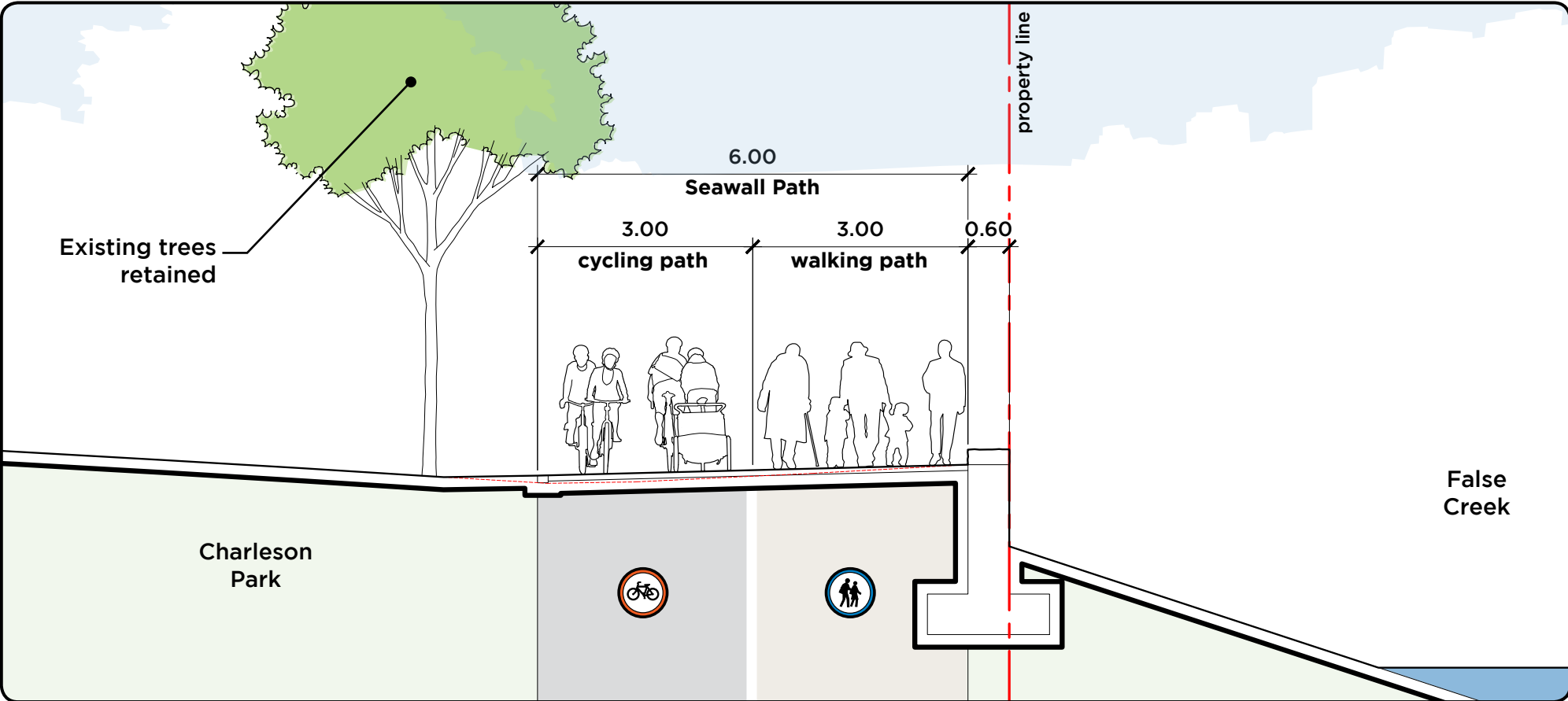
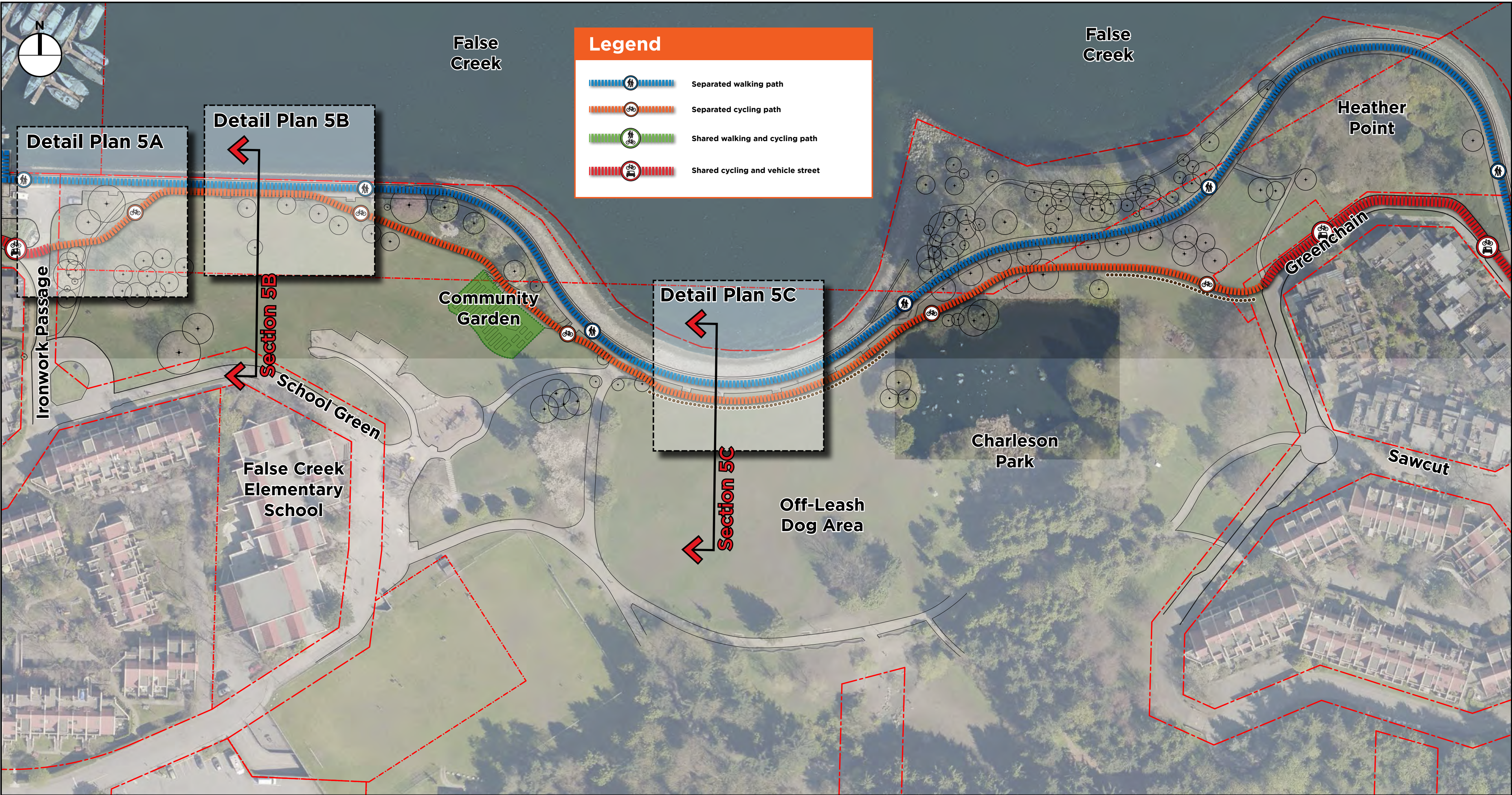
Our Recommendation

Recommended Solutions	Why?	When?
Re-align cycling path at Spruce Harbour Marina to avoid the loading area. See Detail Plan 5A, Board 5.2 Key components of design: <ul style="list-style-type: none">• 3.0m asphalt cycling path .	Shared space and sharp turns through the marina loading area increase the potential for conflicts between people walking, cycling, and driving.	Winter 2016/17
Reduce size of paved cul-de-sac between School Green and Ironwork Passage and add green space.	Cul-de-sac is larger than needed.	Winter 2016/17
Identify a suitable and serviceable location to install an accessible public washroom near the west end of Charleson Park.	There is a lack of accessible public washroom in this area.	Under review
Widen pathway from the marina to the community garden. Provide painted separation and signage to clearly mark walking and cycling paths. See Detail Plan 5B, Board 5.3 Key components of design: <ul style="list-style-type: none">• Path widened to 6.0m.• Separated 3.0m walking and 3.0m cycling paths.• Existing trees retained.	Separated paths improve safety and comfort for all Seawall users.	Winter 2016/17
Maintain existing path for walking only and create a new cycling path between trees and community garden. Work with the community garden group to design a path that accommodates their needs. Key components of design: <ul style="list-style-type: none">• Existing 4.6m path becomes walking only.• 3.0m asphalt cycling path.• Some garden amenities relocated.	A safer and more comfortable pathway can be created by re-routing the cycling path than by widening the existing path into the mature landscaping.	Winter 2016/17
Maintain existing path for walking only and create a new cycling path adjacent to the off-leash dog area. See Detail Plan 5C, Board 5.3 Key components of design: <ul style="list-style-type: none">• Existing 4.6m path becomes walking only• Median with existing benches.• 3.0m asphalt cycling path.• Barrier between cycling path and off-leash dog area.	Separated paths improve safety and comfort for all Seawall users. A barrier will provide protection for dogs, dog owners, and people cycling.	Winter 2016/17
Maintain existing path around Heather Point for walking only and create a new cycling path along existing worn dirt path to Greenchain. Key components of design: <ul style="list-style-type: none">• Existing 4.6m path becomes walking only.• 3.0m asphalt cycling path.• Paint markings on Greenchain to direct movement.	A safer and more comfortable pathway can be created by formalizing the dirt cycling path than by widening the existing path into the mature landscaping around Heather Point.	Winter 2016/17

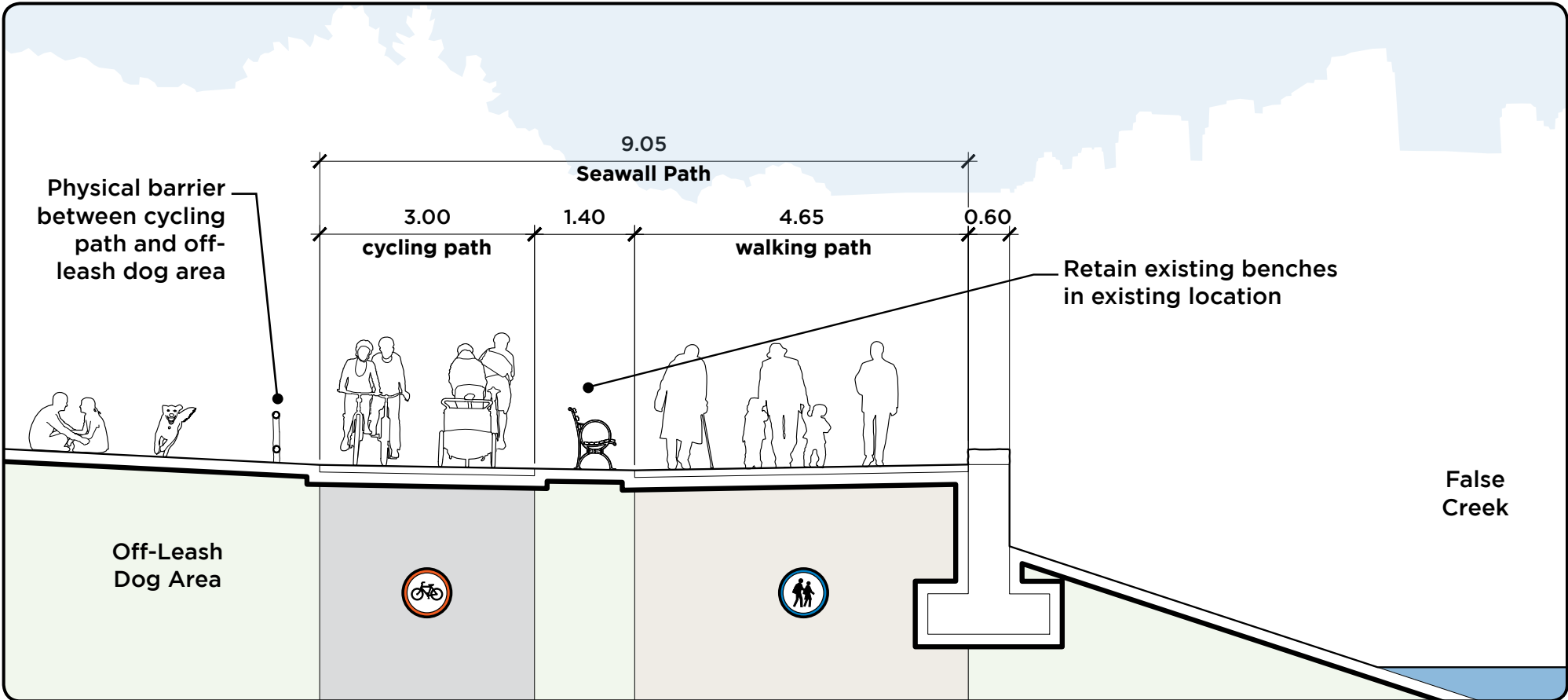
Refer to Board 5.2 and 5.3 for Sections and Detail Plans

Our Recommendation

Refer to Board 5.3 for Detail Plans 5B and 5C

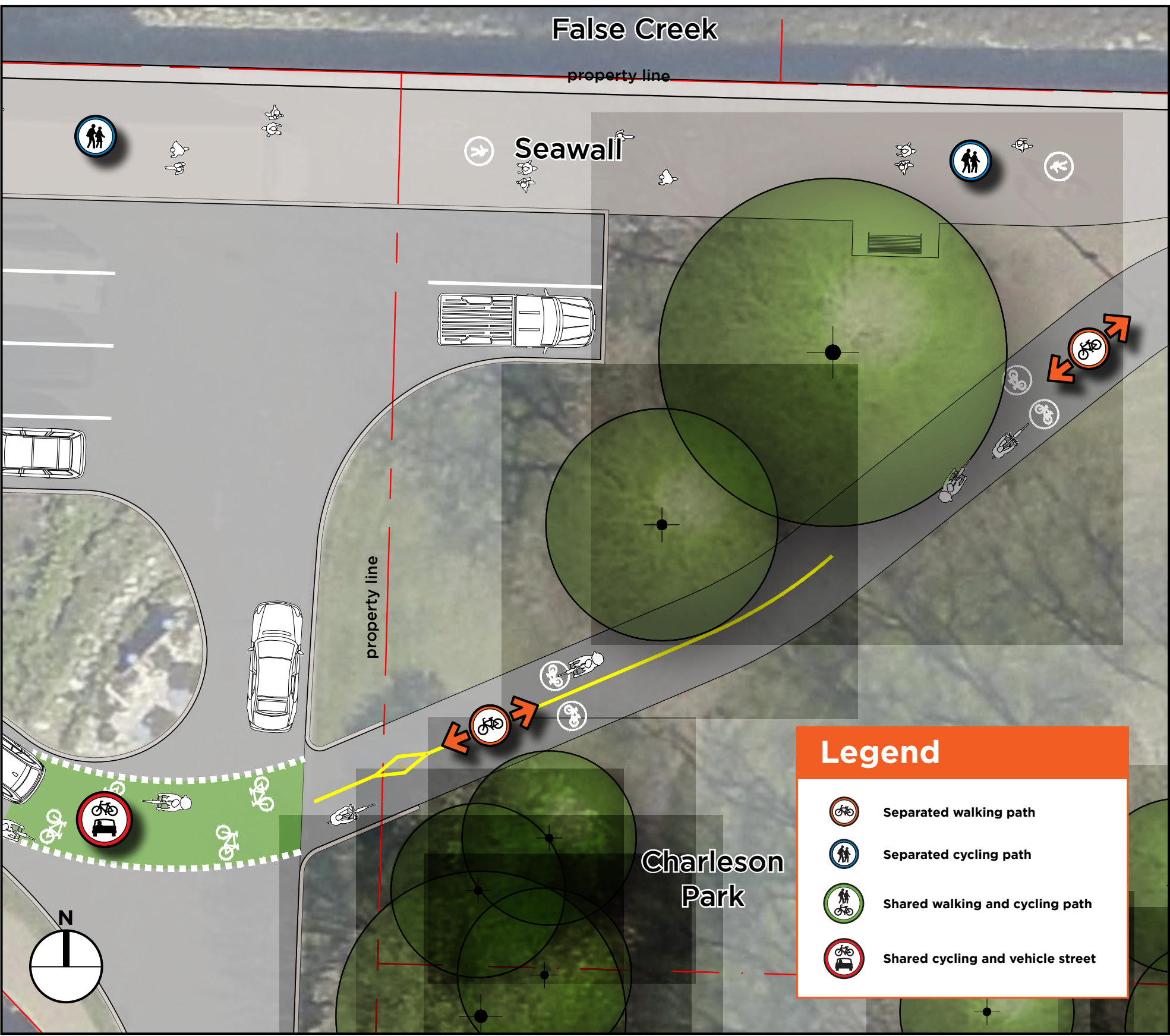


Section 5B



Section 5C

Detail Plan 5A

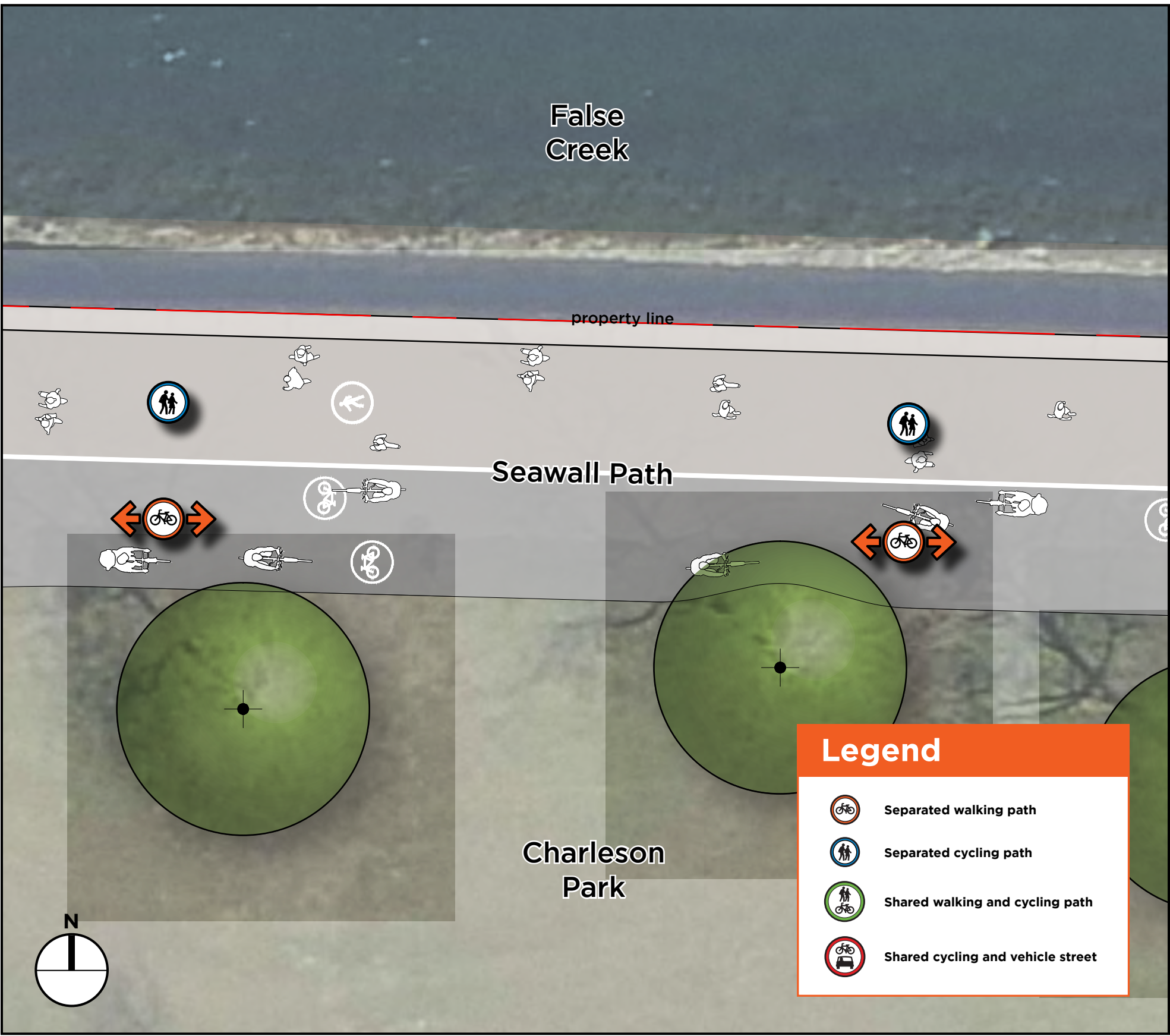


Re-align cycling path at Spruce Harbour Marina to avoid the loading area.



Existing view, Ironwork Passage at marina parking lot looking East

Detail Plan 5B



Widen pathway from the marina to the community garden. Provide painted separation and signage to clearly mark walking and cycling paths.



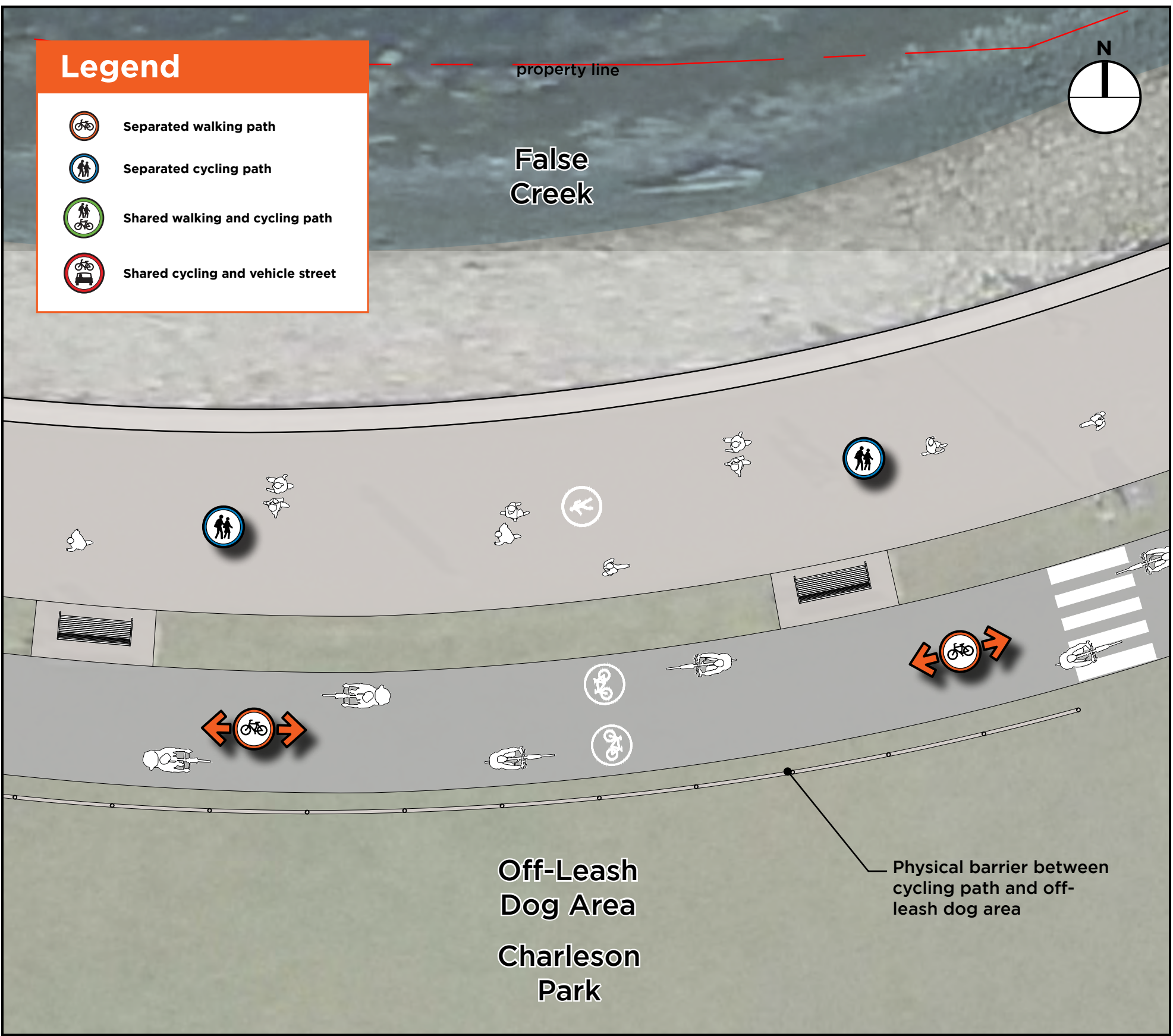
Existing view, Seawall Path East of Spruce Harbour Marina looking East

Detail Plan 5C

Maintain existing path for walking only and create a new cycling path adjacent to the off-leash dog area.



Existing view, Seawall Path at off-leash dog area in Charleson Park looking East



“I would like to see the community garden preserved.”

“With a public space this big, we need accessible public washrooms!.”

“It is important to divert faster bikes to the Bypass and improve separation between cyclists and pedestrians.”

“The most urgent part of this section is reconfiguring the route through the marina parking lot.”