

SUPPORTIVE HOUSING IN VANCOUVER

February 2022



New warm, safe homes with supports on Southeast Marine Drive at Beatrice Street

BC Housing and the City of Vancouver are taking collective action to address the critical needs of people experiencing, or at risk of, homelessness in Vancouver.

Vancouver is in a housing crisis and more than 2,000 people across the city are experiencing homelessness. Creating warm, safe homes with supports for people experiencing, or at risk of, homelessness in our communities continues to be a top priority for BC Housing and the City of Vancouver.

BC Housing and the City of Vancouver are proposing to build a six-storey residential building with approximately 72 new homes with supports at 1925 Southeast Marine Drive. The homes would be for adults, seniors, and people with disabilities who are experiencing, or are at risk of, homelessness with a priority for people in the local community.

- All units would be studio apartments with a private bathroom and kitchen
- At least 5% of the homes would be fully accessible, with all homes designed to be universally adaptable to residents of all abilities
- The building would also include amenities such as shared laundry, a dining area, program space, and a parkade



Homes with supports help create safe, inclusive communities for everyone.

Bringing people inside means there are fewer people outside struggling to survive. When a person chooses to live in supportive housing, they:

- have a warm, safe place to call home
- can access the necessities of life such as food, washrooms, and laundry
- can begin to heal from the damage caused by living outside
- strengthen community connections





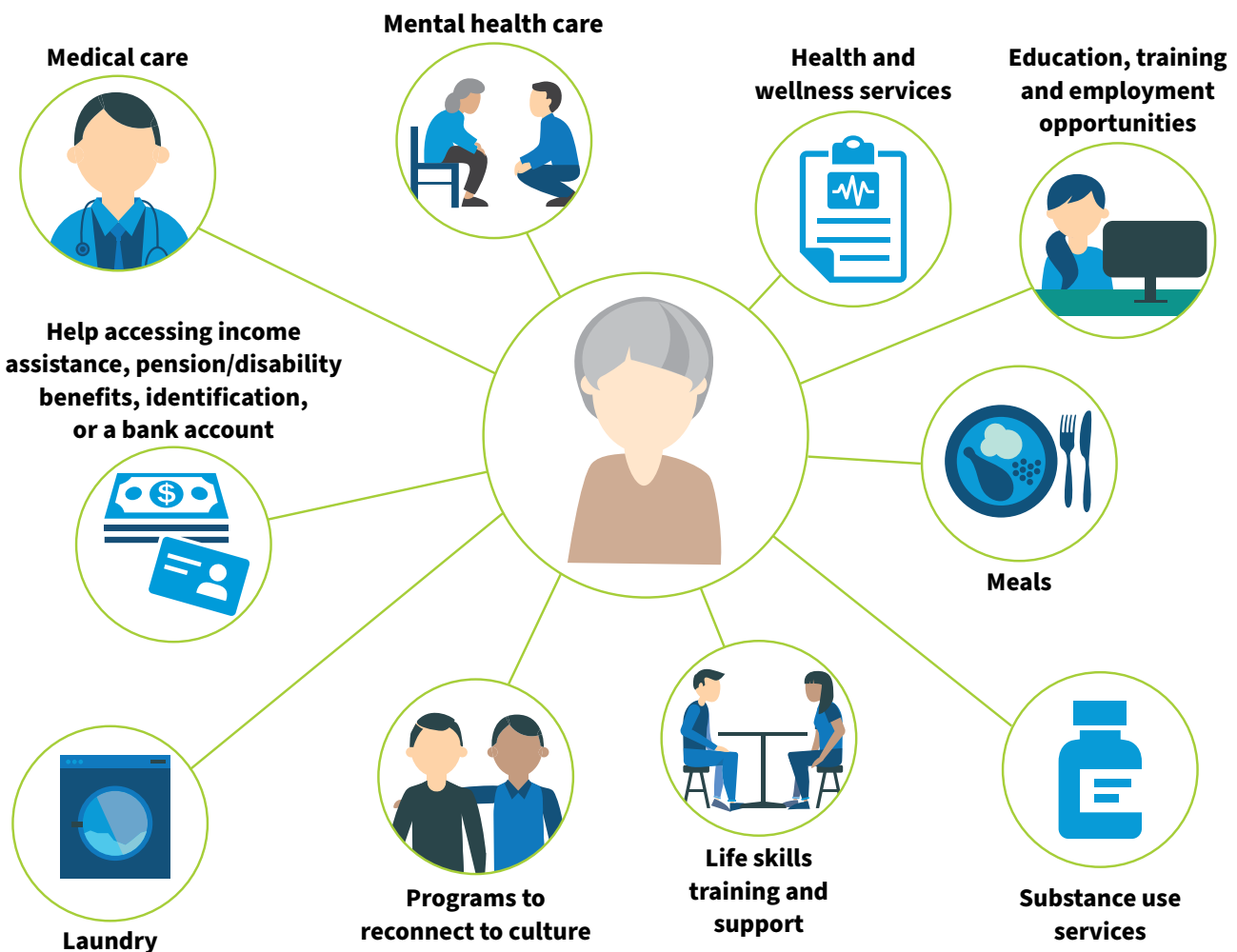
Helping people in need

People who are at risk of, or are experiencing, homelessness are not all the same. They can be young people, seniors, persons with disabilities, and anyone who has experienced trauma, poverty, or struggled with the high cost of housing. Each person requires a unique combination of services and programs to support their health and wellbeing.

Supportive Housing: A vital connection to programs and services

Trained support workers partner with each resident to develop a customized plan to meet their personal and housing goals. Some supports are offered inside the building while others are offered in the local community.

In addition to caring for the residents, the non-profit operator is also responsible for taking care of the building and property. Many non-profits organize courtesy neighbourhood 'Clean Teams,' employing residents to help care for the area.



To learn more about the Community Benefits of Supportive Housing, visit:

www.bchousing.org/research-centre/library/community-acceptance/community-benefits-supportive-housing

Supportive housing programs are managed by non-profit housing operators that bring professional building management experience and expertise providing customized supports tailored to meet the unique needs of each resident.

All residents in supportive housing have made a choice to live there, pay rent, and are able to access the supports provided by non-profit housing operators, health care professionals and other community-based programs.

It takes a community to address homelessness

Homelessness is a complex challenge that is being addressed by governments, community groups and people working together.

Recognizing the urgent need for housing, the Province, through BC Housing, the City of Vancouver and the Federal Government are partnering and have signed a Memorandum of Understanding confirming their shared commitment to create more than 350 homes for people experiencing homelessness.



The Kettle Society

If approved, this building would be managed by The Kettle Society, an established non-profit housing provider that supports people in more than 400 affordable and supportive homes in Vancouver.



In communities all across the city, people are taking action to welcome residents and support the success of supportive housing.

Moving forward at 1925 Southeast Marine Drive

BC Housing and the City are committed to moving forward with a rezoning application to develop this specific site.

Through the City of Vancouver’s development process, we invite community feedback on aspects of the development proposal, including:

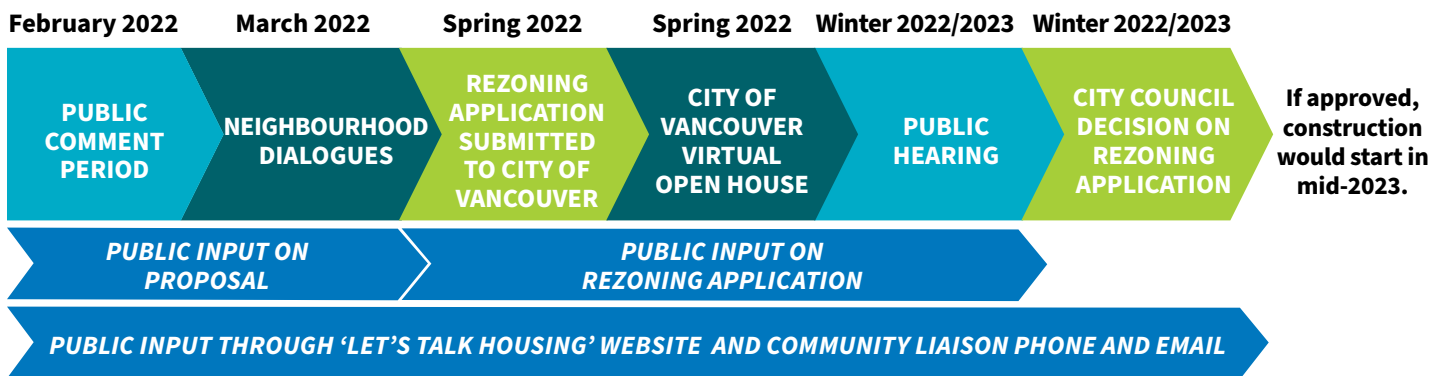
- Building and site design elements such as lighting and landscaping
- Local representation for the Community Advisory Committee
- Ideas for how to support the success of the proposed building

A Community Advisory Committee offers the opportunity to work together to facilitate information sharing and dialogue and to build and maintain positive relationships among the community, the building operator and program partners.

As with any other development in Vancouver, information about a building’s future residents such as their race, gender, level of income, private healthcare needs, or sexual orientation does not factor into City Council’s decision to approve a site.

The community can provide feedback on this proposed housing by visiting letstalkhousingbc.ca/vancouver-marine. The Community Liaison can also be reached at communityliaison@bchousing.org or by calling 604-829-9321 Monday to Friday between 9 AM and 4 PM.

Opportunities for community input



Dates in the timeline are approximate and subject to change.

Funding

The B.C. government, the City of Vancouver and CMHC have committed funding towards the development of permanent supportive housing units for people in need in Vancouver. This funding will allow the Province and the City of Vancouver to address the immediate and urgent needs of people experiencing homelessness in Vancouver.



Translated materials available at letstalkhousingbc.ca/vancouver-marine
 Ang mga naisaling materyales ay mahahanap sa letstalkhousingbc.ca/vancouver-marine
 ਅਨੁਵਾਦਿਤ ਸਮੱਗਰੀ letstalkhousingbc.ca/vancouver-marine 'ਤੇ ਉਪਲਬਧ ਹੈ
 翻譯版本材料可在 letstalkhousingbc.ca/vancouver-marine 上找到

For information on how to apply to live in a supportive housing building, contact **Orange Hall at 604-648-4270.**

