



**KEY PERFORMANCE INDICATORS - Q4 2011**

PROPERTY CRIME	Q4 2011	Q4 2010	% Change
DISTRICT 1	2,186	2,187	0.0%
DISTRICT 2	1,707	1,745	-2.2%
DISTRICT 3	1,688	1,978	-14.7%
DISTRICT 4	2,324	2,381	-2.4%
<b>CITY-WIDE*</b>	<b>7,918</b>	<b>8,294</b>	<b>-4.5%</b>



PROPERTY CLEARANCE TYPE	Q4 2011	Q4 2010	% Change
UNFOUNDED	1.9%	2.0%	-7.4%
FOUNDED NOT CLEARED	80.1%	81.3%	-1.5%
CHARGED	11.8%	10.7%	10.8%
CLEARED BY OTHER MEANS	6.2%	6.0%	3.1%

VIOLENT CRIME	Q4 2011	Q4 2010	% Change
DISTRICT 1	339	384	-11.7%
DISTRICT 2	717	678	5.8%
DISTRICT 3	308	336	-8.3%
DISTRICT 4	185	211	-12.3%
<b>CITY-WIDE*</b>	<b>1,552</b>	<b>1,610</b>	<b>-3.6%</b>



VIOLENT CLEARANCE TYPE	Q4 2011	Q4 2010	% Change
UNFOUNDED	5.9%	6.7%	-12.3%
FOUNDED NOT CLEARED	47.8%	46.9%	1.9%
CHARGED	37.0%	35.1%	5.6%
CLEARED BY OTHER MEANS	9.2%	11.3%	-18.2%

RESPONSE TIMES	Q4 2011	Q4 2010	% Change
DISTRICT 1	07:30	07:31	-0.3%
DISTRICT 2	11:12	09:03	23.8%
DISTRICT 3	10:45	10:58	-2.1%
DISTRICT 4	10:30	11:44	-10.5%
<b>CITY-WIDE*</b>	<b>10:09</b>	<b>09:39</b>	<b>5.1%</b>



TRAFFIC INJURIES	Q4 2011	Q4 2010	% Change
DISTRICT 1	63	55	14.5%
DISTRICT 2	99	70	41.4%
DISTRICT 3	97	110	-11.8%
DISTRICT 4	90	90	0.0%
<b>CITY-WIDE*</b>	<b>349</b>	<b>325</b>	<b>7.4%</b>



TRAFFIC DEATHS	Q4 2011	Q4 2010	% Change
<b>CITY-WIDE*</b>	<b>2</b>	<b>2</b>	<b>0.0%</b>



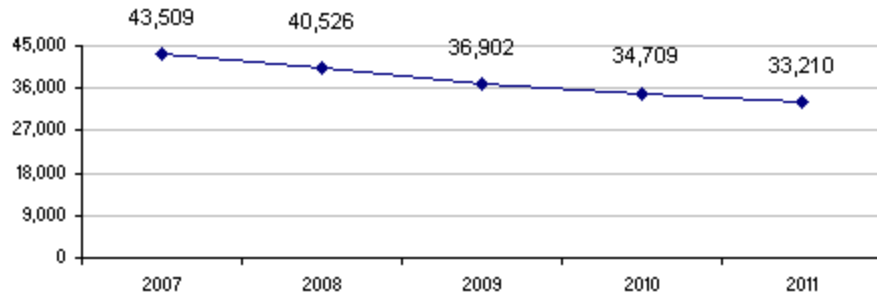
\* City-wide totals include incidents coded as location unknown



**TOTAL NUMBER OF INCIDENTS**

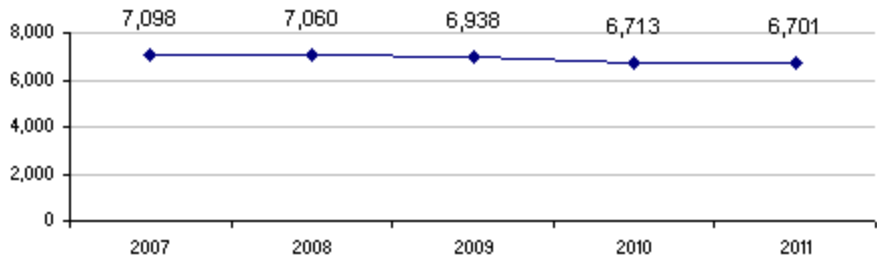
**PROPERTY CRIME**

YTD December 31st



**VIOLENT CRIME**

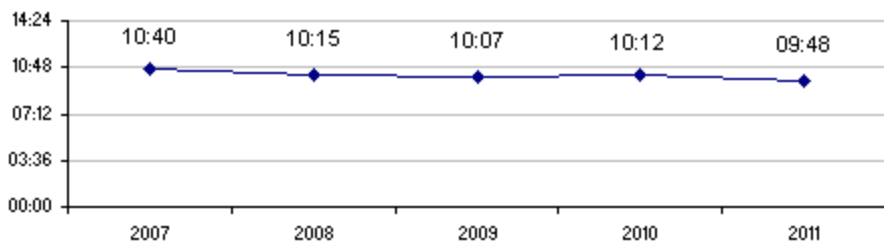
YTD December 31st



**RESPONSE TIMES**

Minutes:Seconds

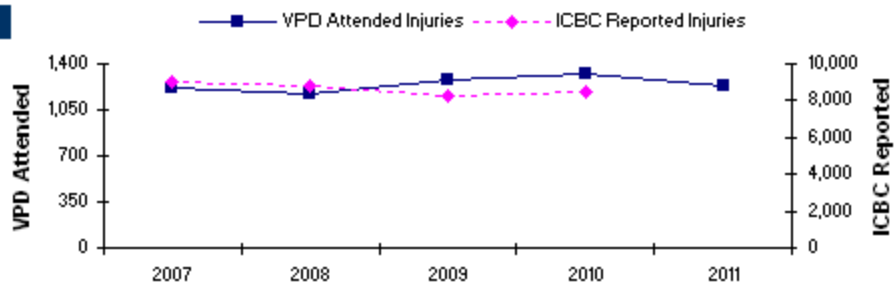
YTD December 31st



**TRAFFIC INJURIES**

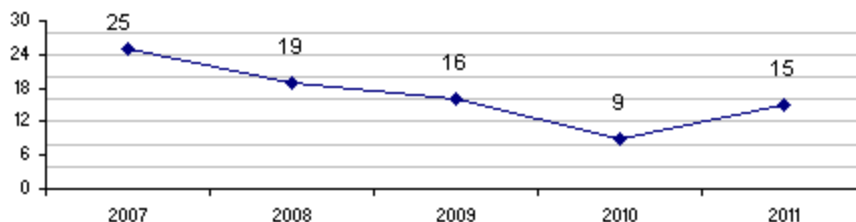
VPD  
YTD December 31st

ICBC  
YTD September 30th



**TRAFFIC DEATHS**

YTD December 31st



# KEY PERFORMANCE INDICATORS

Q4 2011

Planning, Research & Audit Section

January 2012



VANCOUVER POLICE DEPARTMENT  
*Beyond the Call*



## TABLE OF CONTENTS

Executive Summary .....	3
Introduction .....	5
Property Crime & Clearance Rates.....	6
Violent Crime & Clearance Rates .....	9
Response Times .....	12
Traffic Related Injuries & Deaths .....	14
Appendix .....	17



### LIST OF TABLES

Table 1: City-wide & District Annual Property Crime Comparisons .....6

Table 2: Recent Property Crime Trends .....6

Table 3: Five Year Trend for Property Crime Rate per 1,000 Population .....7

Table 4: Property Crime Clearance Rates .....8

Table 5: City-wide & District Annual Violent Crime Comparisons .....9

Table 6: Recent Violent Crime Trends .....10

Table 7: Five Year Trend for Violent Crime Rate per 1,000 Population.....10

Table 8: Violent Crime Clearance Rates .....11

Table 9: City-wide & District Annual Response Time Comparisons .....12

Table 10: Recent Priority 1 Response Times .....13

Table 11: ICBC Reported Injuries .....15

Table 12: Fatal Traffic Incidents.....15

### LIST OF FIGURES

Figure 1: Annual Property Crime Rate per 1,000 Population.....8

Figure 2: Annual Violent Crime Rate per 1,000 Population .....11

Figure 3: Priority 1 Response Times.....13

Figure 4: Motor Vehicle Accidents with Injuries .....14

Figure 5: Fatalities Resulting in Motor Vehicle Incidents .....16



---

## EXECUTIVE SUMMARY

---

### Property Crime

In the fourth quarter of 2011, reported property crime fell by 4.5%, from 8,294 to 7,918 offences, when compared to the same quarter last year. Comparing year-end 2010 to 2011 figures shows that the level of all reported property crime decreased by 4.3% from 33,210 to 34,709 offences.

### Violent Crime

The number of crimes against persons decreased 3.6% from 1,610 to 1,552 offences when comparing the fourth quarters of 2010 and 2011. Overall, there were fewer incidents of violent crime in 2011 (6,701) than there were in 2010 (6,713). This represents a decrease of 0.2% in violent crime.

### Clearance Rates

In the fourth quarter of 2011 the VPD cleared 11.8% of property crimes as "Cleared by Charge". This rate is 1.1% higher than last year's rate over the same time period and 1.5% higher than last quarter.

"Cleared by Charge" violent crime clearance rates increased from 35.1% to 37.0% when compared to the same quarter last year. However, there were 1.6% fewer incidents "Cleared by Charge" this quarter than compared to last quarter which reported a clearance rate of 38.6%.

### Response Times

Priority 1 response times in the fourth quarter of 2011 (10:09) were slower by 30 seconds (5.1%) when compared to the same quarter last year (9:39). Overall, response times are 3.9% faster city-wide when comparing 2010 (10:12) to 2011 (9:48) year-end figures.

### Traffic Attended Injuries & Deaths

The VPD attended 24 more traffic injury calls in the fourth quarter of 2011 (349) compared to the same quarter last year (325). This represents a 7.4% increase in traffic injury attended calls. Overall, the VPD attended 6.9% fewer traffic injury calls in 2011 (1,232) than they did in 2010 (1,323).

ICBC data, which is one quarter behind, reported 6,219 traffic related injuries in the third quarter of 2010 and 6,024 injuries in the third quarter of 2011. This represents a 3.1% decrease in ICBC reported injuries.

There were 2 traffic fatalities that occurred in the final quarter of 2011 (both of which are under autopsy review) and 2 fatalities occurred in the final quarter of 2010. Overall, there were 15 fatalities that occurred in 2011, including the 2 pending an autopsy report to determine if the fatality was due to a medical condition or a motor vehicle collision.



**Annual Citizen Satisfaction Levels**

Citizen satisfaction survey results are reported annually. The 2011 results will be reported in the first quarter 2012 KPI Report.

**Budget Variance**

Budget variance data for the quarter is presented to the Vancouver Police Board through their Finance Committee.



---

## INTRODUCTION

---

The Vancouver Police Department's (VPD) 2008-2012 Strategic Plan establishes the VPD's vision of being "Canada's leader in policing – providing safety for all". The Strategic Plan identifies policing priorities that include the following seven operational goals:

- To reduce property crime by 20% by 2012;
- To reduce violent crime by 10% by 2012;
- To suppress violent gang activity;
- To reduce traffic-related injuries and deaths;
- To improve liveability by reducing street disorder;
- To implement best practices for consequence management and emergency preparedness; and,
- To enhance proactive and visible policing.

The establishment of organizational goals is critical, and success can be accurately determined through effective measurement. The VPD and Vancouver Police Board identified Key Performance Indicators (KPIs) that provide a macro-level perspective of organizational performance. A KPI report is produced on a quarterly basis to provide a snapshot of the VPD relative to its primary purpose – public safety.

This KPI Report presents data for the fourth quarter of 2011 (Q4 2011). This quarter is compared to the same quarter the previous year (Q4 2010). A description of the data included in this report and the extraction criteria is available in the appendix. The KPIs that will be presented in this report are:

- Property crime rates;
- Violent crime rates;
- Clearance rates for criminal investigations;
- Traffic related injuries and deaths; and,
- Annual citizen satisfaction survey.<sup>1</sup>

---

<sup>1</sup> This KPI will be reported annually in the second quarter of each year.





PROPERTY CRIME & CLEARANCE RATES

Table 1 shows the breakdown of property crime by District during the fourth quarter of 2010 and 2011. As shown, property crime has decreased 4.5% city-wide when comparing this quarter to the same quarter last year.

Table 1: City-wide & District Annual Property Crime Comparisons

	Q4 2011	Annual Comparison	Q4 2010
District 1	2,186	—	2,187
		0.0%	
District 2	1,707		1,745
		-2.2%	
District 3	1,688		1,978
		-14.7%	
District 4	2,324		2,381
		-2.4%	
<b>City-wide</b>	<b>7,918</b>		<b>8,294</b>
		<b>-4.5%</b>	

To account for seasonal changes, Table 2 shows the quarterly percentage change over the previous year they relate to the number of reported property crimes.

Table 2: Recent Property Crime Trends

Quarter	# of Property Crimes	% Change From Same Quarter Previous Year
Q4 2010	8,294	-3.6%
Q1 2011	7,929	-7.2%
Q2 2011	8,060	-6.7%
Q3 2011	9,065	-1.8%
Q4 2011	7,918	-4.5%



Table 3<sup>2</sup> shows that property crime has decreased annually since the implementation of the 2008 – 2012 Strategic Plan. This decrease is attributed to all areas of property crime with the exception of Arson which has increased 6.8% since 2007.

Table 3: Five Year Trend for Property Crime Rate per 1,000 Population

	Crime Rate					% Change				
	2007	2008	2009	2010	2011	2007-2008	2008-2009	2009-2010	2010-2011	2007-2011
<b>Property Crime</b>	<b>71.33</b>	<b>65.78</b>	<b>58.85</b>	<b>53.97</b>	<b>50.77</b>	<b>-7.8%</b>	<b>-10.5%</b>	<b>-8.3%</b>	<b>-5.9%</b>	<b>-28.8%</b>
B&E - Total	12.35	10.87	8.65	7.69	7.68	-12.0%	-20.4%	-11.1%	-0.2%	-37.9%
Business	4.05	3.66	3.01	2.60	2.63	-9.6%	-17.7%	-13.8%	1.3%	-35.0%
Residence	7.04	5.90	4.49	4.13	4.16	-16.2%	-23.8%	-8.0%	0.8%	-40.8%
Other	1.27	1.31	1.15	0.97	0.88	3.5%	-12.3%	-16.1%	-8.8%	-30.6%
Theft of MV	5.54	4.04	3.05	2.38	1.75	-27.1%	-24.4%	-22.1%	-26.3%	-68.3%
Theft from MV (<=>\$5K)	20.46	18.71	16.18	13.54	11.48	-8.5%	-13.5%	-16.3%	-15.3%	-43.9%
Theft (<=> \$5K)	18.30	17.68	18.02	17.46	16.89	-3.4%	1.9%	-3.1%	-3.3%	-7.7%
Have Stolen Goods	2.21	1.84	1.88	1.52	1.56	-16.6%	2.1%	-19.3%	2.8%	-29.4%
Fraud	3.86	3.21	3.52	3.94	3.60	-16.7%	9.4%	11.9%	-8.4%	-6.5%
Arson	0.40	0.43	0.33	0.30	0.42	9.7%	-24.8%	-6.5%	38.4%	6.8%
Mischief (<=> \$5K)	8.22	9.00	7.22	7.14	7.39	9.5%	-19.7%	-1.2%	3.6%	-10.1%

<sup>2</sup> The 2011 crime rate is based on a 5-year estimate. Figures and Tables will be updated in the Q1 2012 report once BC Stats publishes the official 2011 population estimate.



The property crime rate has experienced nine consecutive annual decreases. Figure 1 shows the crime rate declined from 100.42 crimes per 1,000 population in 2002 to a low of 50.77 property crimes per 1,000 population in 2011. The dashed line represents the property crime reduction goal set in the 2008-2012 Strategic Plan.

Figure 1: Annual Property Crime Rate per 1,000 Population

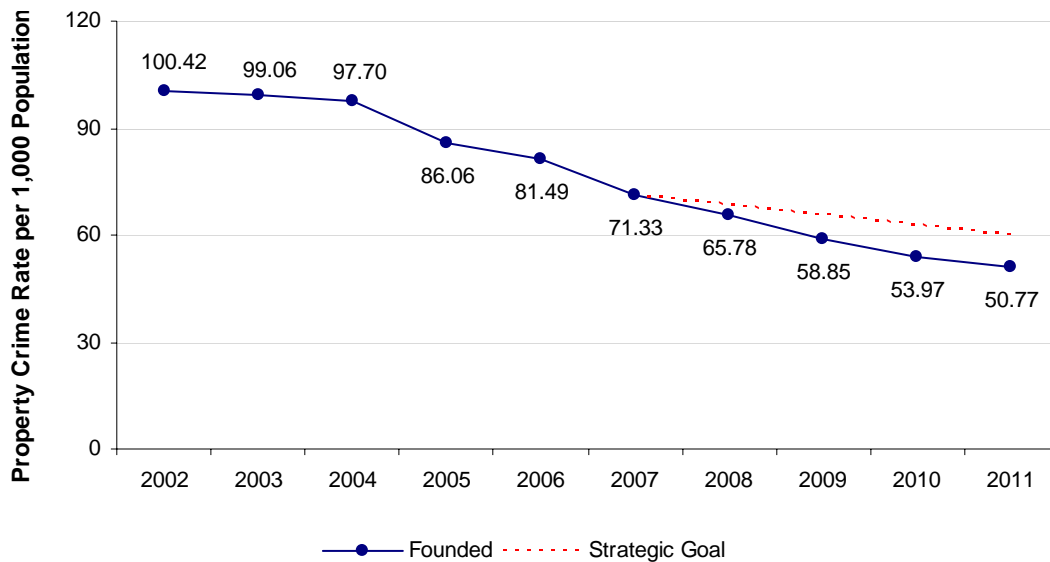


Table 4 shows that in the fourth quarter of 2011 the VPD cleared 11.8% of property crimes as “Cleared by Charge”. This rate is 1.1% higher than last year’s rate over the same time period and 1.5% higher than last quarter.

Table 4: Property Crime Clearance Rates






Clearance Type	Current (Q4 2011)	Last Year (Q4 2010)	Last Quarter (Q3 2011)
Unfounded	1.9%	2.0%	1.5%
Founded Not Cleared	80.1%	81.3%	83.0%
Charged	11.8%	10.7%	10.3%
Cleared by Other Means	6.2%	6.0%	5.3%



### VIOLENT CRIME & CLEARANCE RATES

Table 5 shows the breakdown of violent crime by District during the fourth quarter of 2010 and 2011. City-wide, violent crime is down 3.6% when compared to the same time last year. District 2 saw a slight increase in violent crime, while the remaining Districts saw moderate decreases.

Table 5: City-wide & District Annual Violent Crime Comparisons

	Q4 2011	Annual Comparison	Q4 2010
District 1	339	 -11.7%	384
District 2	717	 5.8%	678
District 3	308	 -8.3%	336
District 4	185	 -12.3%	211
<b>City-wide</b>	<b>1,552</b>	 <b>-3.6%</b>	<b>1,610</b>



To account for seasonal changes, Table 6 shows the quarterly percentage change over the previous year as they relate to the number of reported violent crimes.

Table 6: Recent Violent Crime Trends

Quarter	# of Violent Crimes	% Change From Same Quarter Previous Year
Q4 2010	1,610	-4.1%
Q1 2011	1,640	-5.3%
Q2 2011	1,788	7.6%
Q3 2011	1,712	0.1%
Q4 2011	1,552	-3.6%

Examining a five year trend for violent crime shows this crime category has decreased 12.2% since the establishment of the 2008 – 2012 Strategic Plan. Overall, Sexual Offences (up 4.5%) is the only crime against person that has not decreased over this time period (see Table 7).

Table 7: Five Year Trend for Violent Crime Rate per 1,000 Population

	Crime Rate					% Change				
	2007	2008	2009	2010	2011	2007-2008	2008-2009	2009-2010	2010-2011	2007-2011
<b>Violent Crime</b>	<b>11.66</b>	<b>11.49</b>	<b>11.07</b>	<b>10.44</b>	<b>10.24</b>	<b>-1.5%</b>	<b>-3.7%</b>	<b>-5.7%</b>	<b>-1.9%</b>	<b>-12.2%</b>
Culpable Homicide	0.03	0.03	0.03	0.01	0.02	-6.2%	-2.0%	-51.1%	63.8%	-26.4%
Attempted Murder	0.03	0.03	0.03	0.02	0.02	22.3%	-16.0%	-45.7%	27.8%	-28.7%
Sexual Offences	0.75	0.73	0.81	0.87	0.78	-2.3%	11.2%	7.2%	-10.3%	4.5%
Assaults	8.36	8.20	8.12	7.87	7.81	-1.9%	-1.1%	-3.1%	-0.7%	-6.5%
Robbery	2.50	2.49	2.08	1.67	1.61	-0.2%	-16.5%	-19.7%	-3.7%	-35.6%



Figure 2 shows the annual violent crime rate has declined for five consecutive years from 12.1 crimes per 1,000 population in 2006 to 10.2 crimes per 1,000 population in 2011. The dashed line represents the violent crime reduction goal set in the 2008-2012 Strategic Plan.

Figure 2: Annual Violent Crime Rate per 1,000 Population

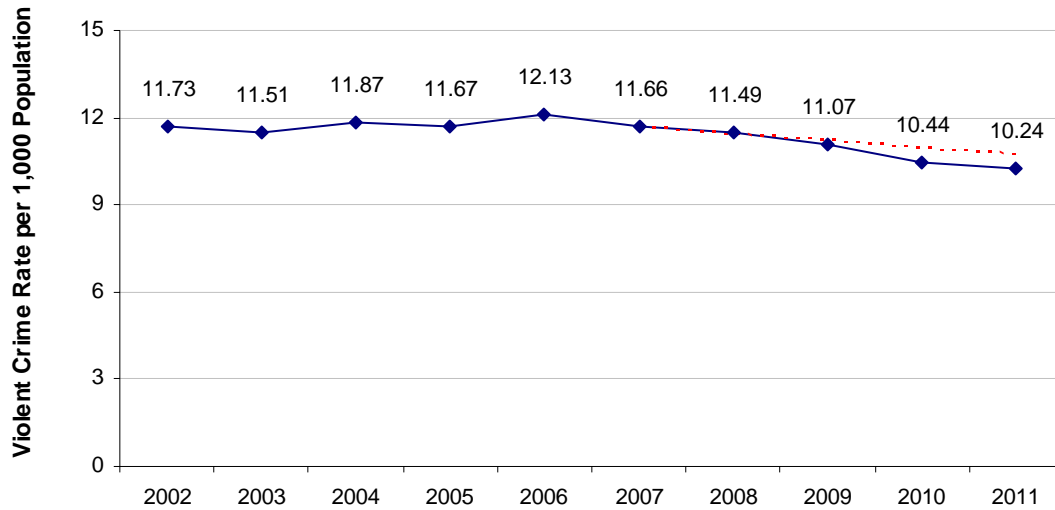


Table 8 shows “Cleared by Charge” violent crime clearance rates increased from 35.1% to 37.0% when compared to the same quarter last year. However, there were 1.6% fewer incidents “Cleared by Charge” this quarter than compared to last quarter which reported a clearance rate of 38.6%.

Table 8: Violent Crime Clearance Rates

Clearance Type	Current (Q4 2011)	Last Year (Q4 2010)	Last Quarter (Q3 2011)
Unfounded	5.9%	6.7%	5.1%
Founded Not Cleared	47.8%	46.9%	46.3%
Charged	37.0%	35.1%	38.6%
Cleared by Other Means	9.2%	11.3%	10.0%



RESPONSE TIMES

Table 9 shows Priority 1 (P1) response times by District and shows the percentage change from this quarter to the same quarter last year. Overall, city-wide P1 response times were slower by 5.1% or 30 seconds. This was driving primarily by a fairly large increase in the District 2 response time.

Table 9: City-wide & District Annual Response Time Comparisons

	Q4 2011	Annual Comparison	Q4 2010
District 1	07:30	-0.3%	07:31
District 2	11:12	23.8%	09:03
District 3	10:45	-2.1%	10:58
District 4	10:30	-10.5%	11:44
<b>City-wide</b>	<b>10:09</b>	<b>5.1%</b>	<b>09:39</b>



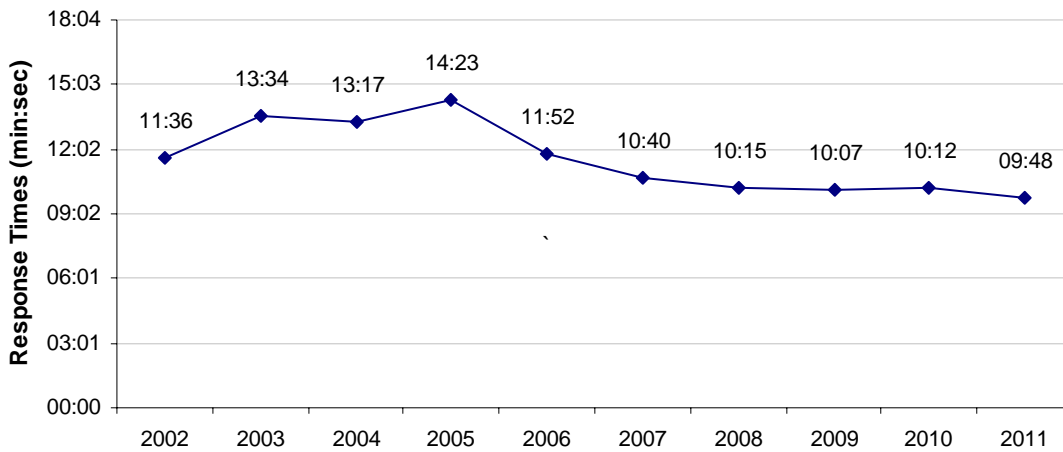
To account for seasonal changes, Table 10 shows the quarterly percentage change over the previous year as they relate to P1 response times.

Table 10: Recent Priority 1 Response Times

Quarter	Response Time	% Change From Same Quarter Previous Year
Q4 2010	09:39	-8.6%
Q1 2011	08:56	-16.2%
Q2 2011	10:22	0.3%
Q3 2011	10:44	5.4%
Q4 2011	10:09	5.1%

Figure 3 illustrates Priority 1 response times by year. The 2011 P1 response time (9:48) decreased 3.9% when compared to the 2010 P1 response time (10:12). This represents a faster response time of 24 seconds.

Figure 3: Priority 1 Response Times







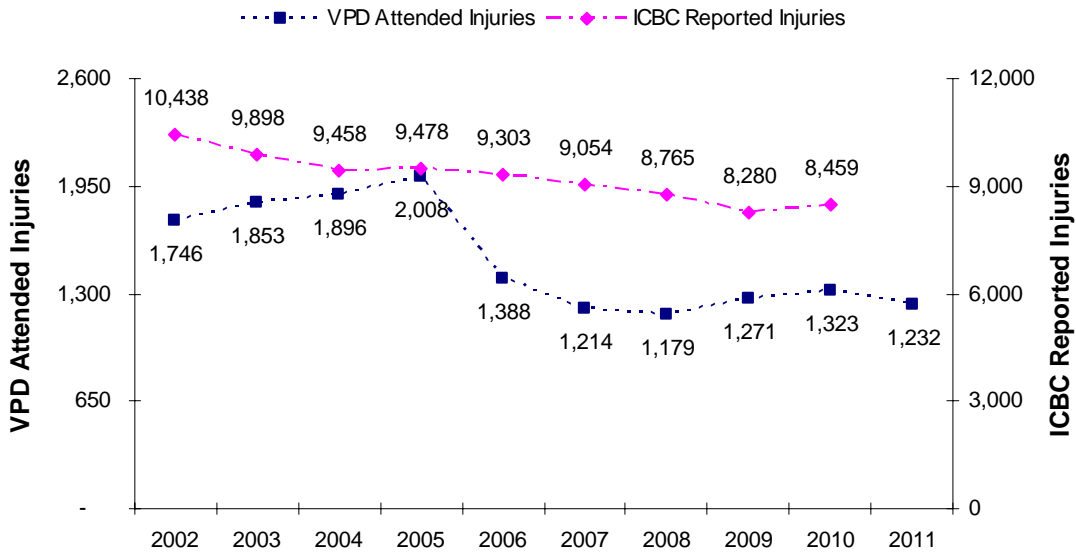
### TRAFFIC RELATED INJURIES & DEATHS

ICBC reported traffic injuries versus VPD traffic injuries attended differ substantially. Data from ICBC speaks to the safety of the roads whereas data from the VPD is more reflective of workload. For example, if calls for service are lower than usual or officers have more proactive time, then officers have more time to attend a motor vehicle accident (MVA) where there is an injury. Conversely, if calls for service are higher and therefore proactive time is lower then officers will not be able to attend as many MVA-with-injury incidents.

Figure 4 depicts the number of ICBC<sup>3</sup> reported injuries from 2002 to 2010 and the number of traffic injury calls the VPD attended from 2002 to 2011. ICBC experienced four consecutive decreases in reported injuries from 2004 (9,478) to 2009 (8,280) before experiencing a 2.2% increase in 2010 (8,459). Overall, ICBC experienced a 19.0% reduction in reported injuries from 2002 to 2010.

In 2011 (1,232), the VPD experienced the first decrease in traffic related attended injuries since 2008 (1,179). Overall, the VPD has attended 29.4% fewer traffic related injury calls since 2002.

Figure 4: Motor Vehicle Accidents with Injuries



<sup>3</sup> ICBC data is one quarter behind in reporting the data to the VPD.



Table 11 breaks down the number of reported injuries that ICBC received during the first, second, and third quarters of 2010 and 2011. Overall, the city of Vancouver has experienced 3.1% fewer motor vehicle accidents involving injuries.

Table 11: ICBC Reported Injuries





	2011	Annual Comparison	2010
<b>Q1</b>	1,953	 -2.2%	1,997
<b>Q2</b>	2,071	 0.0%	2,070
<b>Q3</b>	2,000	 -7.1%	2,152
<b>YTD</b>	<b>6,024</b>	 -3.1%	<b>6,219</b>

Table 12 compares the number of fatal traffic incidents and deaths over the past year by quarter<sup>4</sup>.

Table 12: Fatal Traffic Incidents

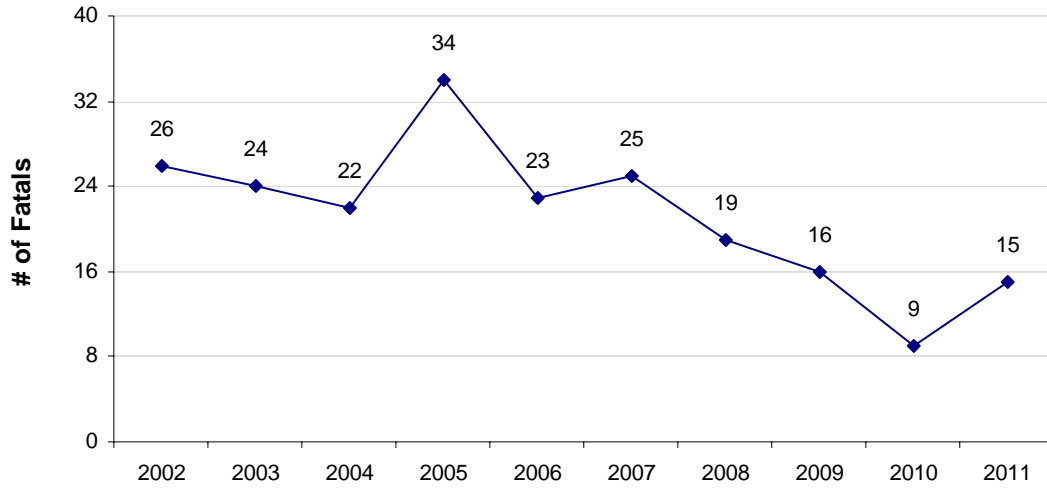
Quarter	# of Incidents	# of Deaths	Quarter	# of Incidents	# of Deaths
Q4 2010	2	2	Q4 2009	4	4
Q1 2011	5	5	Q1 2010	3	3
Q2 2011	4	6	Q2 2010	2	2
Q3 2011	3	3	Q3 2010	2	2
Q4 2011	2	2	Q4 2010	2	2

<sup>4</sup> Percent changes were not included in the tables as the overall small number of total fatalities cause any change to result in percentage changes that appear significant but should not be interpreted as such.



Figure 5 shows there were 15 fatal incidents<sup>5</sup> involving a motor vehicle in 2011.

Figure 5: Fatalities Resulting in Motor Vehicle Incidents



<sup>5</sup> Currently 2 of the 15 fatalities are pending an autopsy report to determine if the fatality was due to a medical condition or a motor vehicle collision.



---

## APPENDIX

---

### Data

The data for this report is obtained from the PRIME records management system. Crime statistics at the VPD are published using the 'all offences method', which captures all of the offences associated with an incident. An incident may include up to four separate offences.

The crime statistics noted in this report reflect the raw reported crime counts based on the all offence method and exclude all cases cleared as unfounded to more accurately represent actual criminal offences rather than incidents reported.

Crime rates are calculated per 1,000 population. BC Statistics cites Vancouver's 2010 population to be 642,843<sup>6</sup>. A five-year estimate was calculated to project the 2011 population in order to calculate crime rates.

*Property crime* includes the following offences:

- Break and Enter
- Theft of Motor Vehicle
- Thefts from Motor Vehicle over/under \$5,000
- Theft over/under \$5,000
- Have Stolen Goods
- Fraud
- Mischief

*Violent crime* includes the following offences:

- Culpable Homicide
- Attempted Murder
- Sex Offence<sup>7</sup>
- Assault
- Robbery

---

<sup>6</sup> BC Stats as of March 30, 2011.

<sup>7</sup> On September 9<sup>th</sup>, 2008, Versadex was updated to reflect the changes brought about by Statistics Canada. Sex Offence crimes now include Luring a Child via Computer as well as Voyeurism.



*Clearance Rates* describe the status of an incident. An incident can be cleared either as founded or unfounded.

## Founded

- *Cleared by Charge:* A charge has been laid or is recommended to be laid against a suspect in connection with the incident.
- *Cleared by Other Means:* A suspect has been identified in connection with the incident but is processed by another means.
- *Founded but not Cleared:* A suspect has not been identified in connection with the incident.

## Unfounded

- *Unfounded:* No violation of the law took place.

*Response times* are calculated by subtracting the time a unit arrives on scene at a call from when a call for service is received by E-Comm. The following calls are excluded from response time calculations: on-view calls, self initiated calls, calls with a response time less than one minute and greater than 10 hours, and call types motor vehicle incident with injury and missing persons.