

9 Parks and Open Space

Summary of Proposals

Amount of Park Space

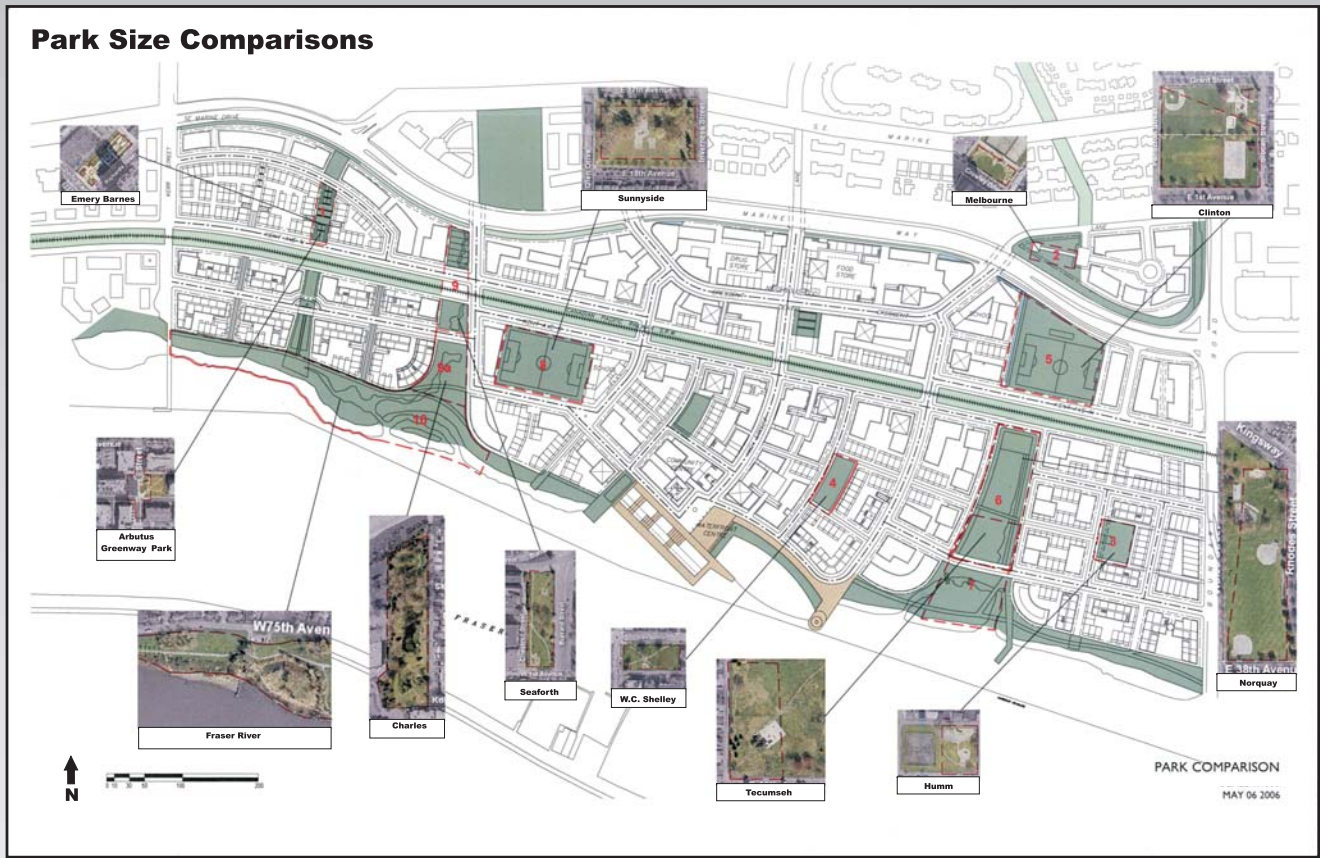
- The Application proposes 10 hectares (25 acres) of public parkland for a projected population of 12,800; a ratio of 0.8 hectares (1.95 acres) per 1,000 residents.

Types of Park Space

- The Application proposes a variety of types of parks and open space to meet different needs, including:
 - 'Urban' plazas: 'Town Square' and 'Mill Plaza'
 - Neighbourhood parks within residential areas
 - Playing fields
 - Wildlife habitat areas
 - Linear riverfront parks, greenways and 'green corridors'
- The programming of activities in the various parks and open spaces will be determined through later stages of planning, involving community input on needs and priorities.

Points to Consider

- Victoria-Fraserview/Killarney currently has a park ratio of 1.78 hectares (4.4 acres) per 1,000 residents.
- The proposed level of park space for East Fraserlands is lower than the target of 1.1 hectares (2.75 acres) per 1,000 residents in the Policy Statement, which reflects the historic average level of provision in Vancouver.
- When considering the amount of park space proposed the following points should be noted:
 - The Application proposes a good variety of different park types which balance a range of needs e.g. active recreation and wildlife habitat.
 - The proposed parks are well connected to and complement existing parks in the area.
 - The amount of park space is negotiated in the context of the overall public amenity package based on community priorities and the ability of the development to fund it.



'Avalon' Park Corridor



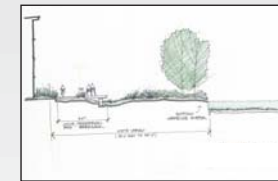
Greenway in Western Neighbourhood



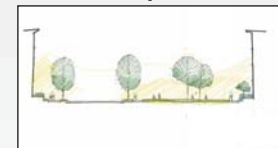
'Kinross' Park Corridor



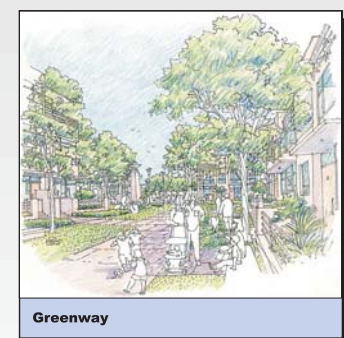
'Mill Bay' and 'Mill Plaza'



Foreshore Walkway Section



Neighbourhood Park Section



Greenway