



CITY OF VANCOUVER

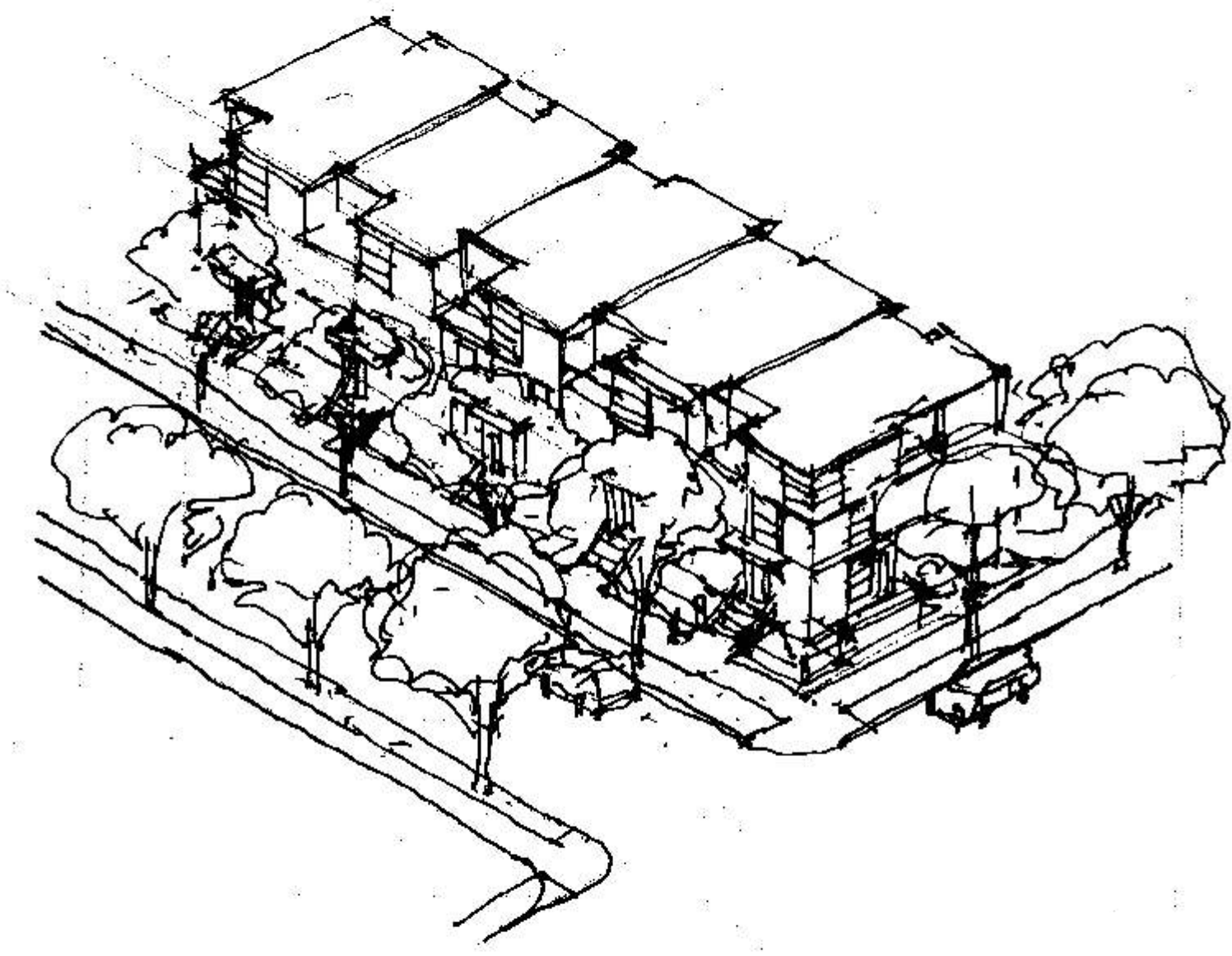
Oakridge Centre Policy Planning Program

HOUSING



Some Housing Choices

2 - 3 Storey Rowhouses



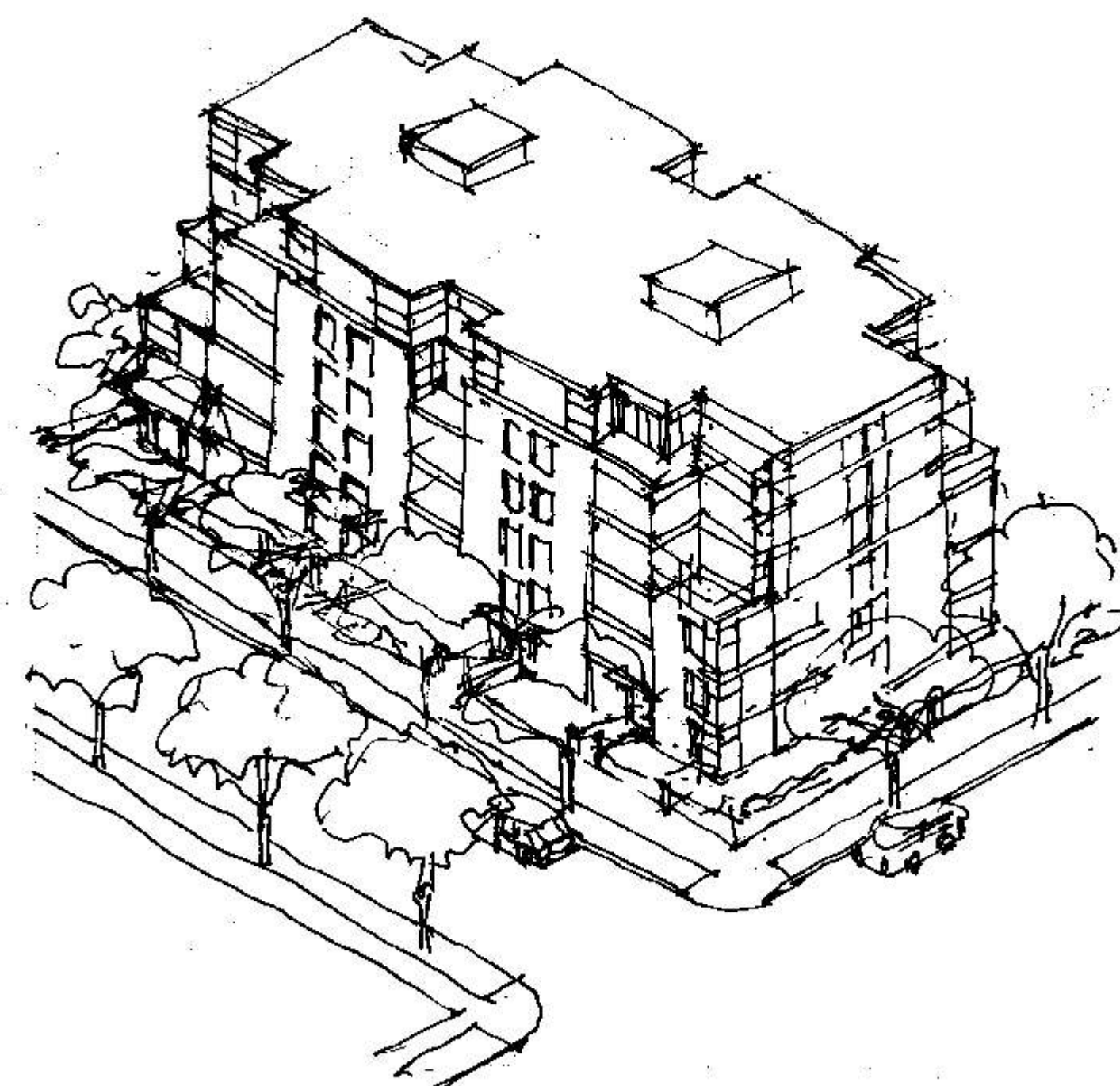
Characteristics

- Local views and outlook
- Ground-orientation
- Front doors on the street
- Multi-level units
- Appeals to wide range of family types

Examples

- 45th and Cambie
- 2100 block W 8th Avenue

5 - 6 Storey Apartments



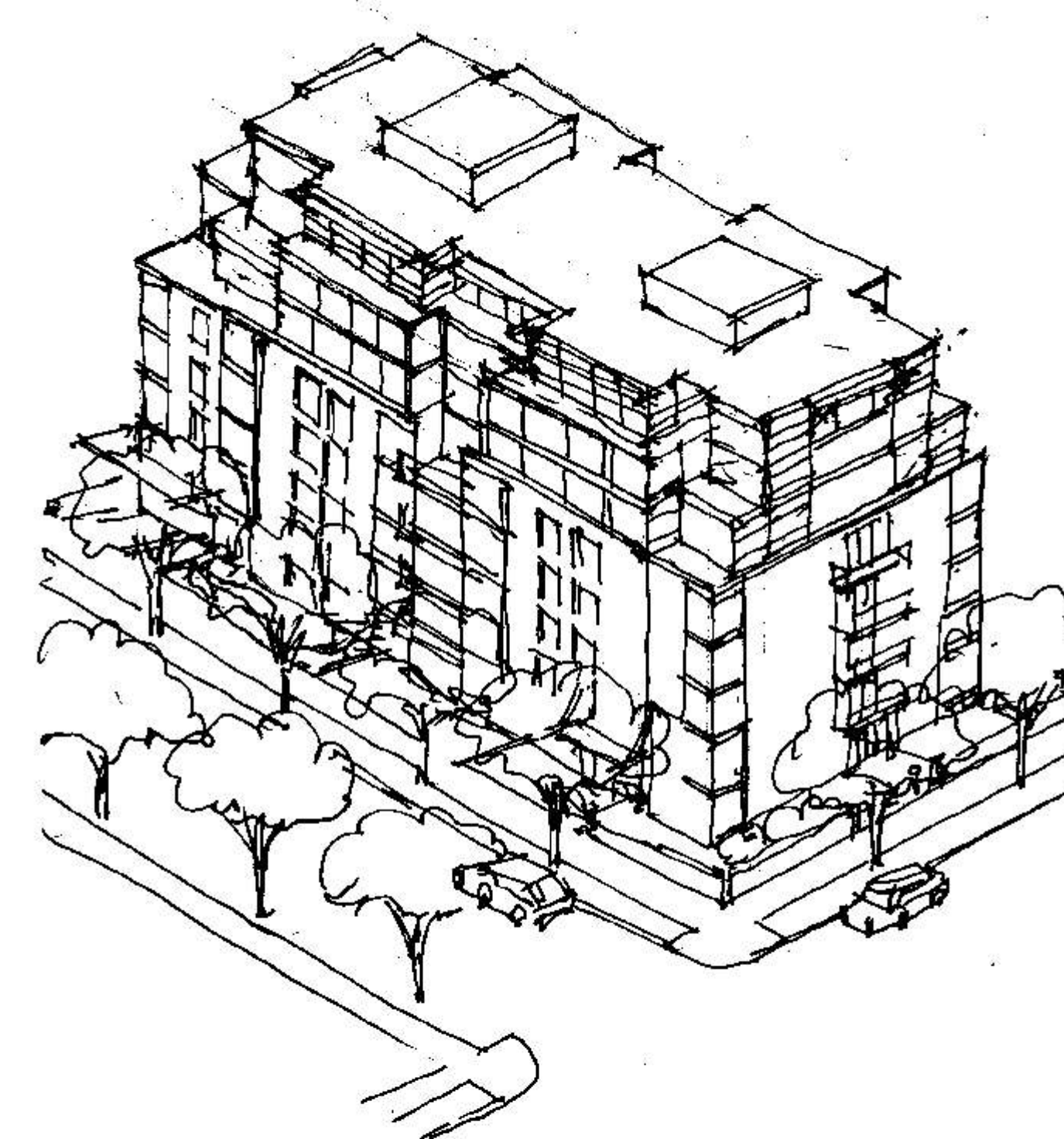
Characteristics

- Views on upper levels
- Ground-orientation on lower levels
- Accessibility suitable for seniors

Examples

- 45th Ave. south of Oakridge Centre
- Arbutus lands

6 - 8 Storey Apartments



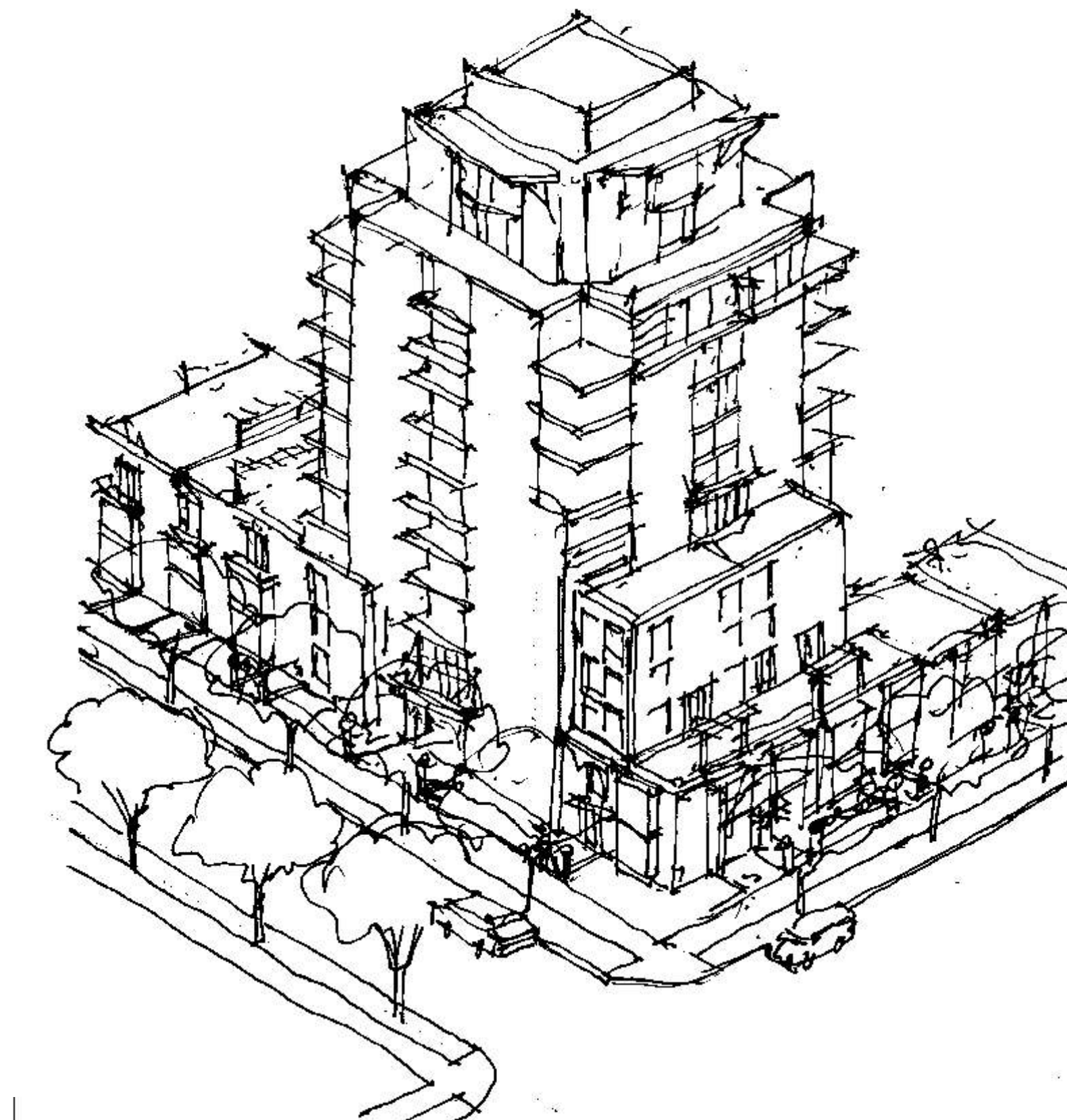
Characteristics

- Views on upper levels
- Ground-orientation on lower levels
- Single-level units
- Accessibility suitable for seniors

Examples

- Arbutus area by Connaught Park
- Yaletown

12 - 15 Storey Apartments



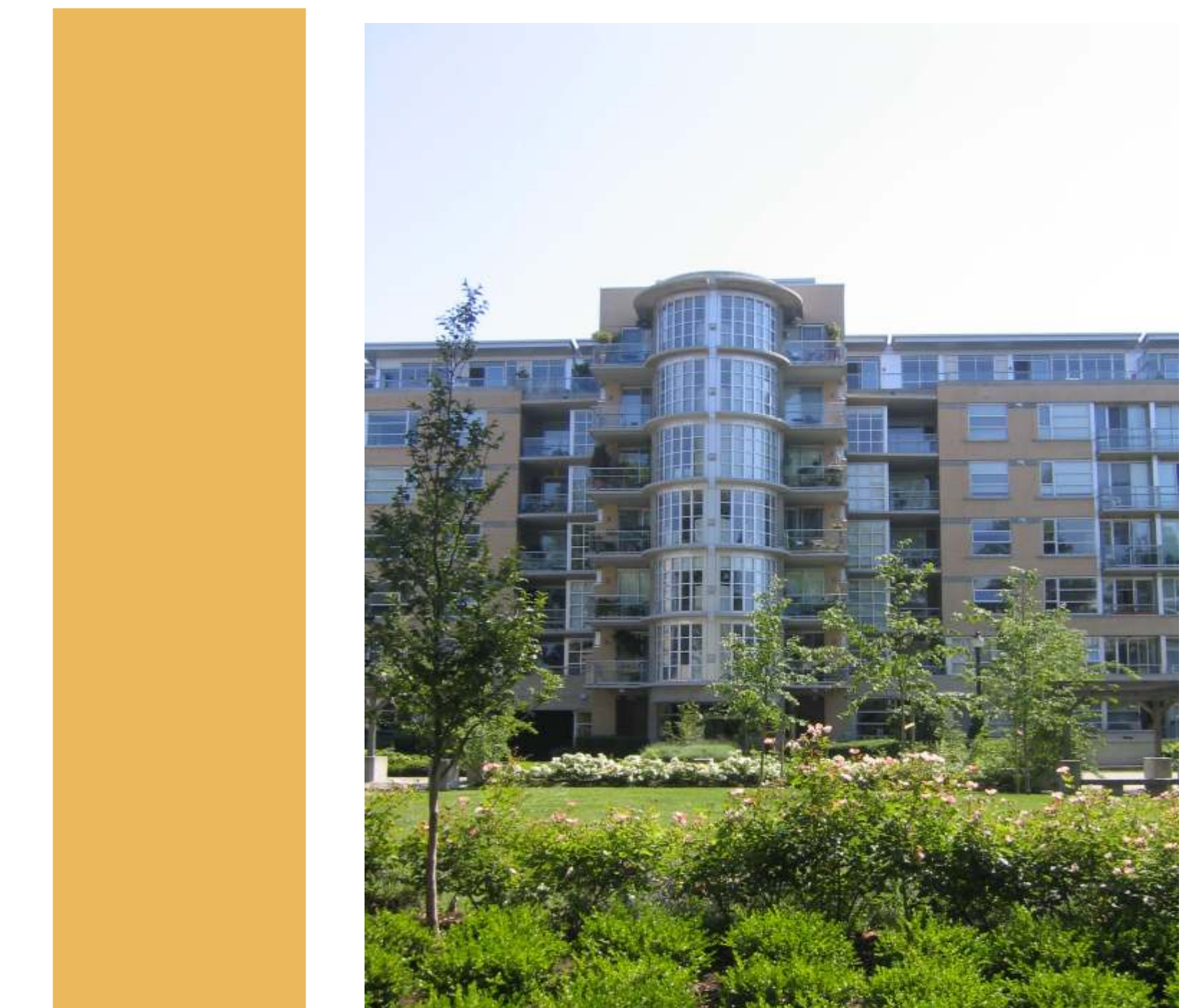
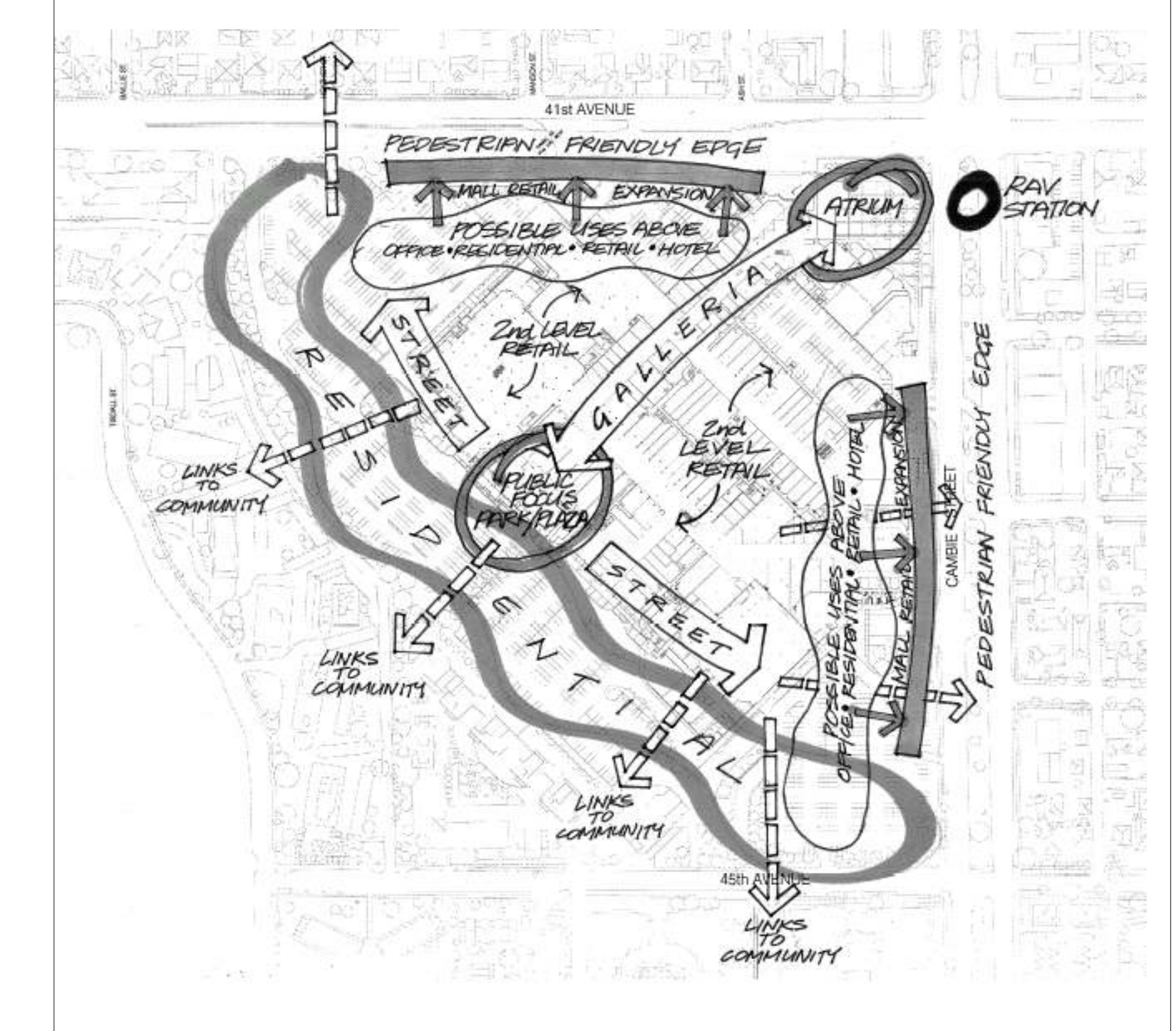
Characteristics

- Views from many levels
- Ground orientation on lower levels
- Allows more land for park and open space
- Accessibility suitable for seniors

Examples

- Portico on South Granville @ 5th Ave.
- W. 10th Avenue near UBC
- Kerrisdale

CONCEPT DIRECTIONS



PEOPLE'S IDEAS

- A mix of housing is desired
- Need affordable housing and accessible seniors' housing
- Build residential above retail
- Build higher density residential uses closer to RAV line
- Concerns re: view blockage and height



THINGS TO THINK ABOUT...

- What type of housing is needed in the community and for who is it needed?
- What height is appropriate? Should new housing be like recent residential development to the southwest?
- Could higher forms be considered in some areas of the site?

