



## Discussion

Oakridge Centre currently has approximately 25,000 sq ft of space with the following facilities: auditorium, branch library, seniors centre, child minding facility, child day care, and a parents' room. The Draft Concept illustrates the potential for up to 50,000 sq ft of community space. The locations shown are only conceptual.

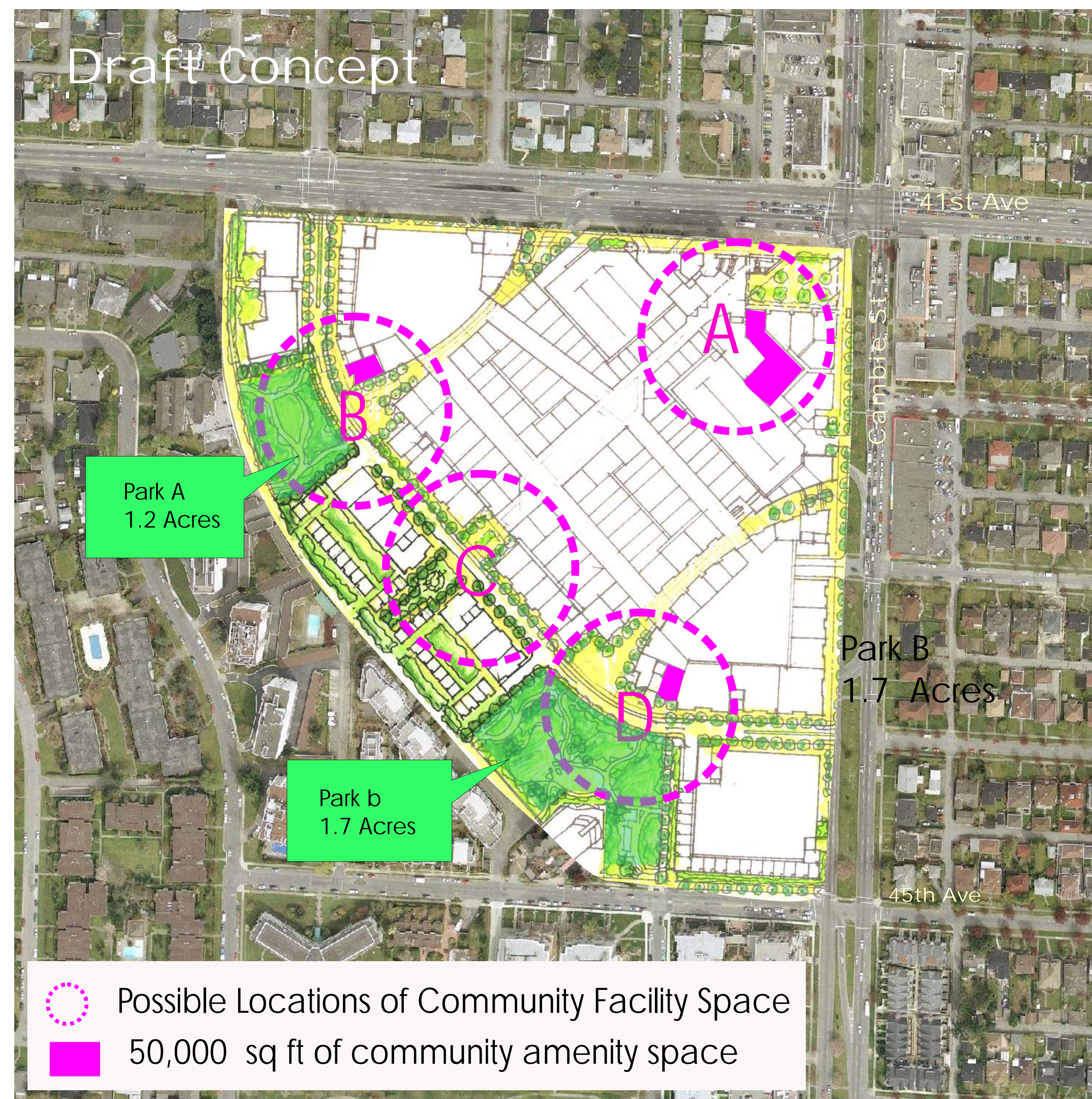
**PUBLIC AND SEMI-PUBLIC COMMUNITY FACILITIES:** There are no City-operated Community Centre facilities in the Oakridge area. Similar facilities are provided by secular and non-secular community organizations. Fees for access vary but are generally higher than those charged in public facilities.

**LIBRARY:** The Oakridge Library is the second busiest branch library in Vancouver. The 13,000 sq. ft. facility is undersized; its below-grade location is substandard with respect to visibility and access to light. They seek approximately 20,000 sq ft.

**CHILDCARE:** The City standard for calculating child care is 1 space for every 114 residents. Currently there is only the capacity to serve 15% of the children living in the Oakridge area.

**YOUTH:** Youth services in the area are provided by non-profit organizations and churches in the Oakridge vicinity. There is a need for additional public youth-oriented spaces and programs in this area.

**SENIORS:** Beyond the Seniors' centre at Oakridge, other community organizations operate a range of semi-public facilities and programs for seniors. As our society ages there will be greater demand for these resources and amenities.



The draft concept shows the addition of 50,000 sq.ft of community space. Currently there is 25,000 sq.ft. Oakridge will also dedicate 2.8 acres of park space on the site. Programming for these community spaces is still under discussion.

## Workshop Questions

What type of general community facilities / services should be kept or added to Oakridge?

Are there any specific youth recreational / community services needed?

What type of activities or features would you like to have in the new parks?