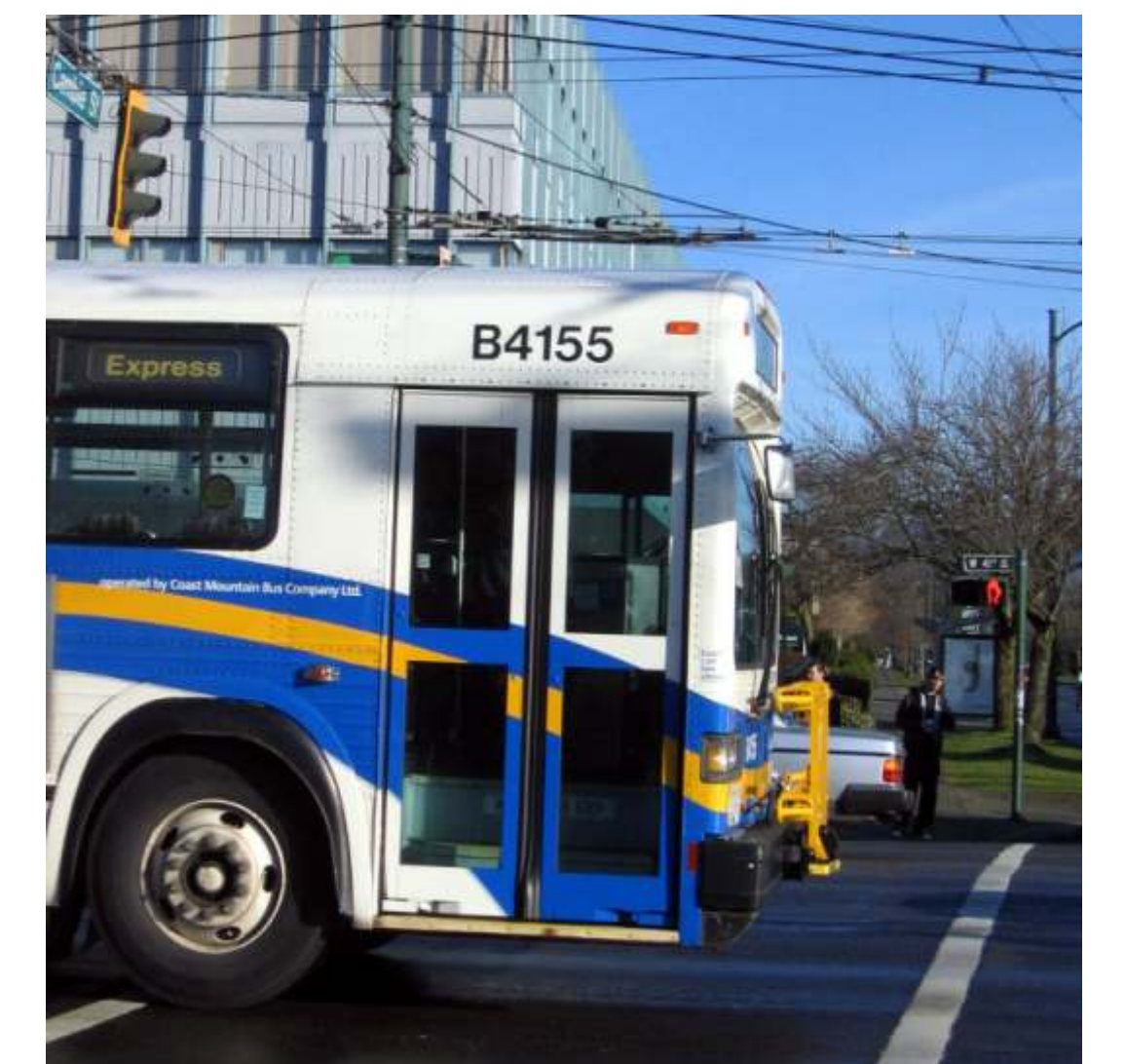
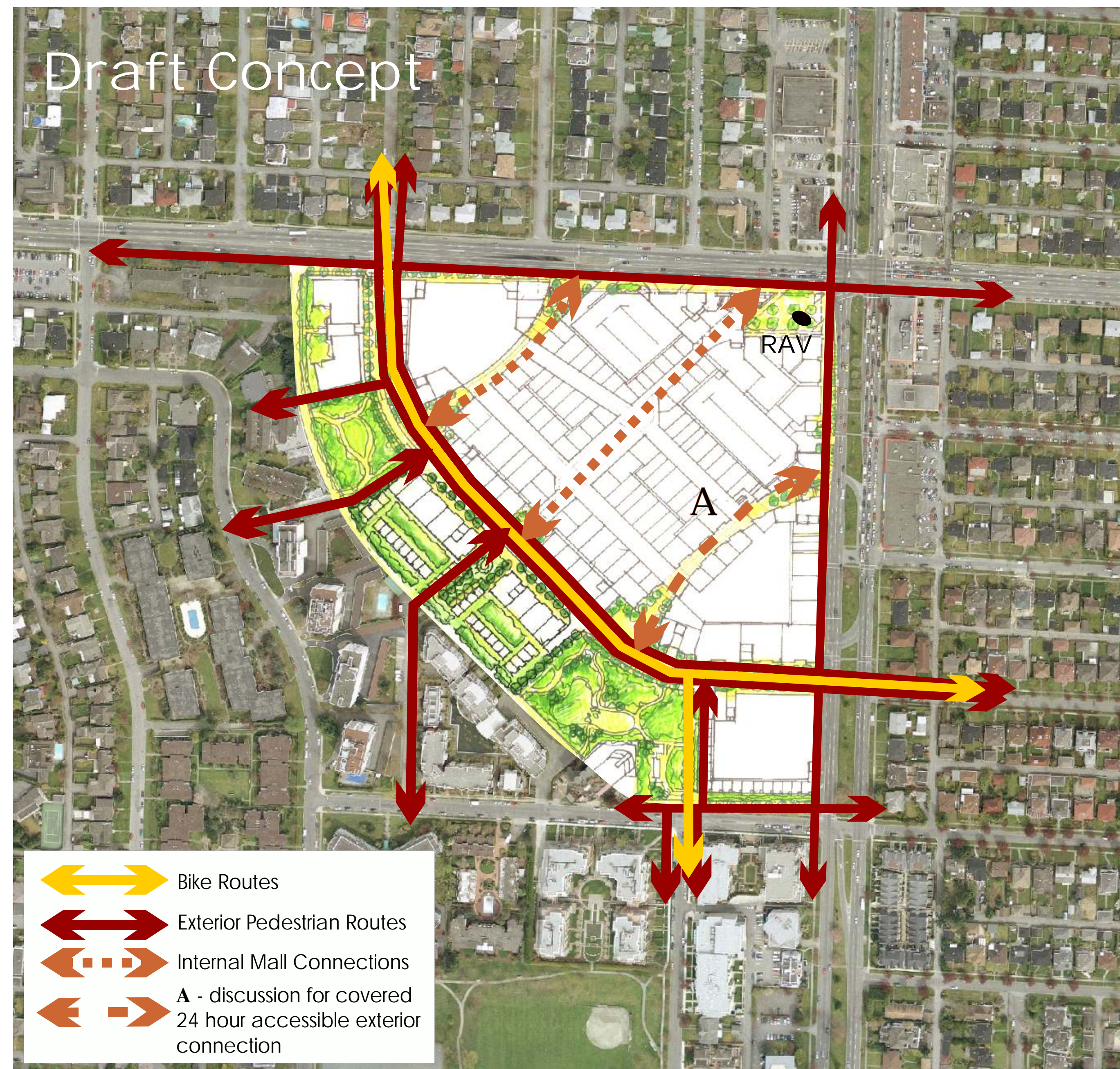


Facts

- Motorized vehicles account for nearly 40% of greenhouse gas emissions in our region.
- Over 9 million people visit Oakridge every year, of which 80 - 85 percent are Vancouverites. 10% of all visitors arrive by transit, compared with 30% at Metrotown.
- Approximately 3,000 people work at Oakridge Centre.
- Over 8000 people live within a 10-minute walk of Oakridge Centre.



Workshop Questions

What do you think can be done to ensure that the Oakridge RAV station is welcoming and safe?

Do you have any suggestions to improve linkages between the RAV station, bus connections and the surrounding neighbourhood?

Oakridge RAV Station & Transit Links

Cambie Street and 41st Avenue will emerge as a key transit hub with the completion of the RAV transit line. Planning for the RAV station at Cambie and 41st Avenue is underway.

Longer term possibilities may include expansion of Oakridge Centre towards the corner of 41st and Cambie, and integration with the RAV station entrance. In the more immediate future, the station entrance will be a freestanding structure in the plaza.

Artist's Illustration of 41st and Cambie

