

# COMMUNITY FACILITIES



## What We've Heard

- Respondents indicated that the most desirable community facilities, in order, would be an upgraded library, community/recreation centre, community policing centre, seniors' center and childcare facilities.
- A number of respondents commented that the library should be expanded, with some noting that it should be moved to ground level and close to transit.
- Community facilities should be more visible, accessible, integrated together in closer proximity to each other

## Discussion

Oakridge Centre currently has approximately 25,000 sq ft of space with the following facilities: auditorium, branch library, seniors centre, child minding facility, child day care, and a parents' room. The Draft Concept illustrates the potential for up to 50,000 sq ft of community space. The locations shown are only conceptual.

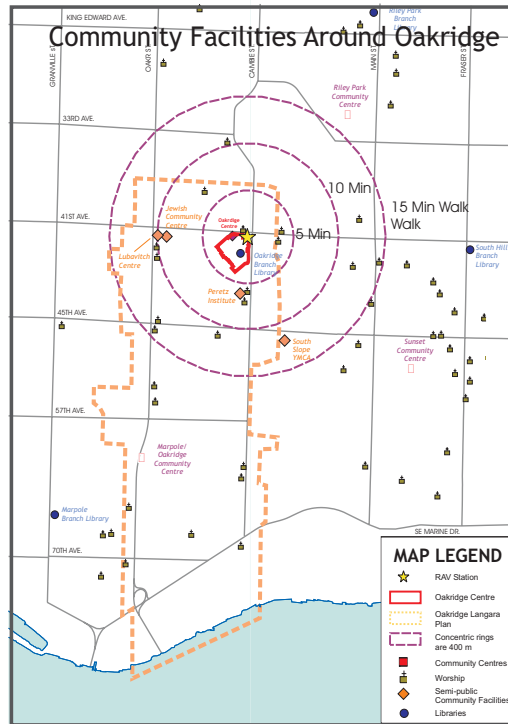
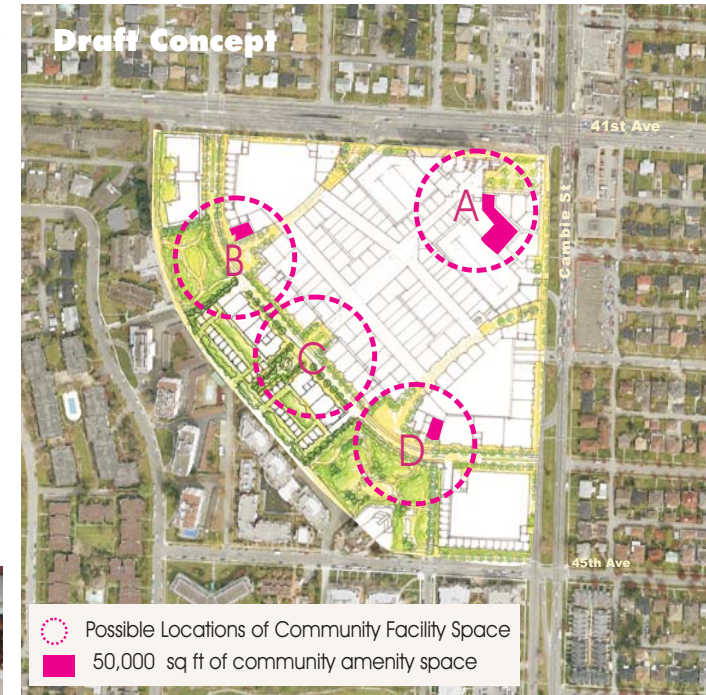
**PUBLIC AND SEMI-PUBLIC COMMUNITY FACILITIES:** There are no City-operated Community Centre facilities in the Oakridge area. Similar facilities are provided by secular and non-secular community organizations. Fees for access vary but are generally higher than those charged in public facilities.

**LIBRARY:** The Oakridge Library is the second busiest branch library in Vancouver. The 13,000 sq. ft. facility is undersized; its below-grade location is substandard with respect to visibility and access to light. They seek approximately 20,000 sq ft.

**CHILDCARE:** The City standard for calculating child care is 1 space for every 114 residents. Currently there is only the capacity to serve 15% of the children living in the Oakridge area.

**YOUTH:** Youth services in the area are provided by non-profit organizations and churches in the Oakridge vicinity. There is a need for additional public youth-oriented spaces and programs in this area.

**SENIORS:** Beyond the Seniors' centre at Oakridge, other community organizations operate a range of semi-public facilities and programs for seniors. As our society ages there will be greater demand for these resources and amenities.



## Existing Policy

- City Plan (1995)**
- City Plan calls for the creation of reinforcement of 'neighbourhood centres' which provide retail and community services that serve the local neighbourhoods.
- Oakridge Langara Policy Statement (1995)**
- New development must contribute to maintenance of existing levels of amenities as well as required amenities for additional residents and employees.
  - If Oakridge Centre is to be rezoned, improvements to public access, programming and/or facilities should be pursued where practical and desirable.

## Questions

- Where do you think community facilities should be located? Co-located, clustered or dispersed throughout the site? A) near RAV, B) near the North Park, C) Near the New Street Plaza, D) Near the South Park.
- Are there facilities that would be ideally located near the RAV station? Near the proposed parks? Elsewhere?
- Which group should have the highest priority for recreation amenities at Oakridge? Children? Youth? Seniors?
- What recreational activities do you want most at Oakridge?

