

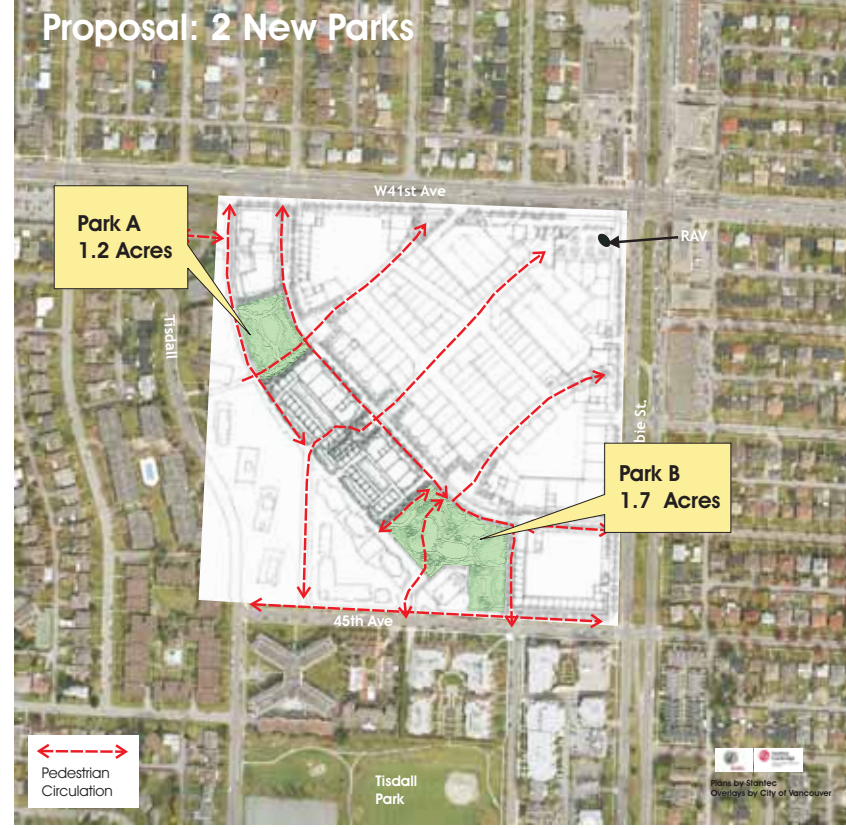
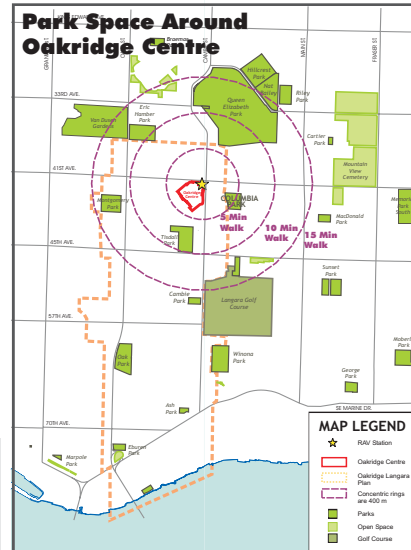
What We've Heard

- Secure 2.83 acres of park space required by previous Oakridge Centre rezoning and provide additional park area to meet demands of new residents.
- People support a range of types of parks and a range of programming.
- There is a general desire for a system of smaller parks and walkways to link existing parks to each other.
- Add green spaces and open public spaces to the site and adjacent to residential developments.
- Improve the plaza at 41st and Cambie.
- Improve existing neighbourhood parks

Facts

Outstanding Park Dedication: a 1983 subdivision of the Oakridge Centre site (for development of Fairchild Court and the seniors building) generated a requirement for dedication of 2.83 acres of park space.

If additional park space cannot be dedicated on-site, the City could consider payment in lieu to fund the purchase of additional park land or improvements to park space.



Existing Policy

Park Board Policy (1992): seek k2.75 acres of neighbourhood park for every 1,000 new residents

Oakridge Langara Policy Statement (1995)

- New parks are to be financed or provided by redevelopment.
- Park sites should be used as focal points.
- Neighbourhood parks should meet minimum size criteria; be located at grade; accommodate active and passive recreation; and be capable of modification to meet changing needs.
- Encourage the provision of outdoor amenity space in new residential developments.



Tisdall Park Looking North



Questions

- Are you supportive of the creation of the two parks as shown on the concept plan? Any modifications?
- Are there specific features (e.g. playground, flower beds, tennis courts) you would like included in the parks?
- Beyond the maintenance of existing facilities, and the obligations of Oakridge Centre to deliver on outstanding park and non-market housing, what additional public amenity requirements will be driven by the scale of new development proposed by the Centre Owners? Looking ahead from 2010 to 2025, what are your priorities?

