

# Oakridge Station Area Study - The Public Realm & Streetscape Improvements



*There is an opportunity to improve the pedestrian environment and to help create a pedestrian-friendly neighbourhood centre in the shopping area along Cambie Street at 41st Avenue.*

2

Street trees scaled to the street should be planted in double rows along the sidewalk wherever space allows. This creates a green canopy along the sidewalk.

Trees that are unhealthy or are an inappropriate species for creating a greener "streetscape" should be replaced with healthy, substantially sized and robust species to create a pleasant walking environment.

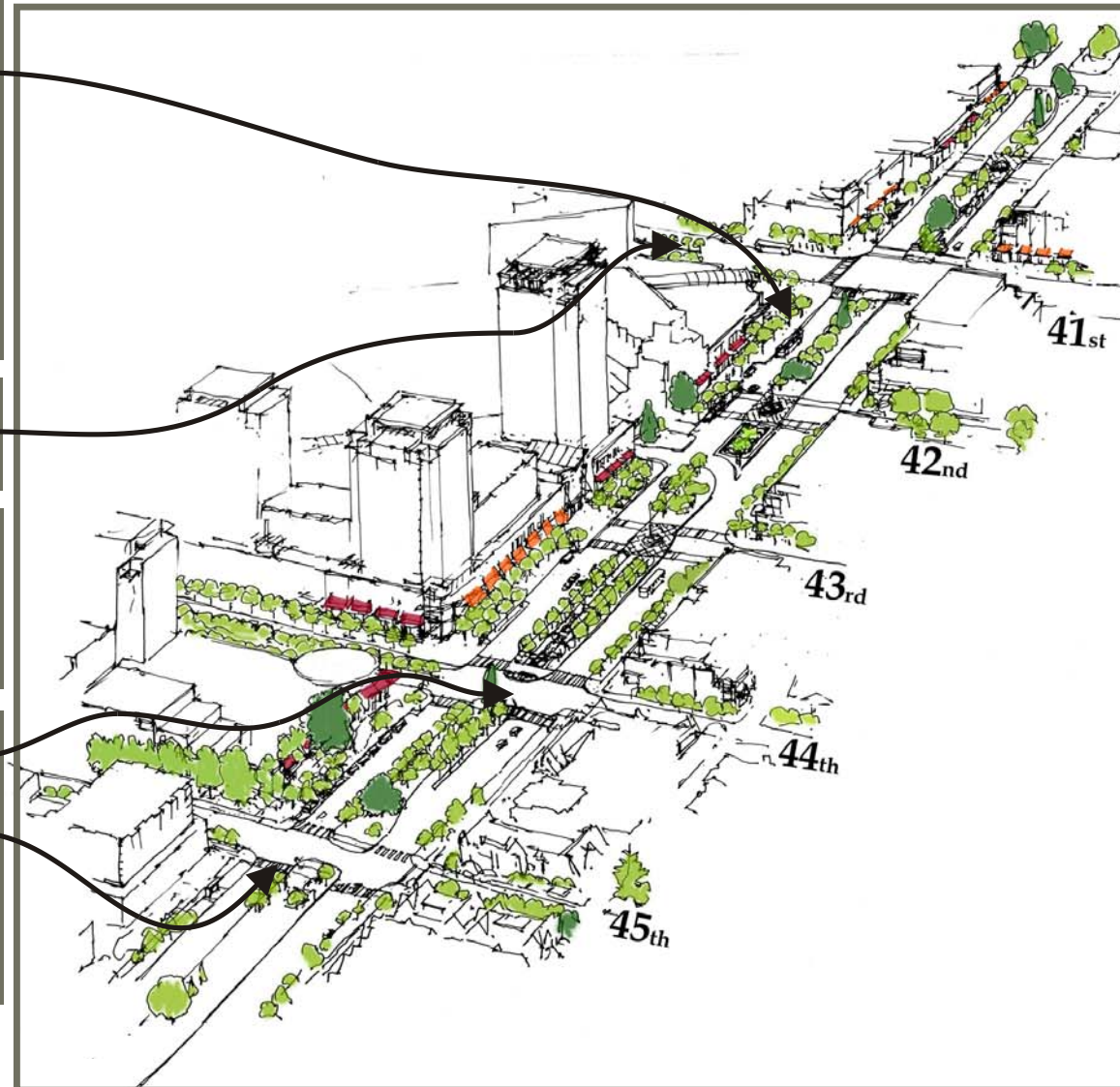
A planted median should be introduced for West 41st Avenue to "Green the street".

Vehicle travel lanes (i.e., 4th southbound lane on Cambie south of 41st) could be replaced with a wider sidewalk, transit improvements (bus bulges) streetside parking and an improved public realm.

Several opportunities exist for improved or new crosswalk arrangements including Cambie at:

- 37th, 41st, 43rd, 44th and 45th Avenues

Curb cuts, crossing distances and light-timing need to be carefully considered from the perspective of all pedestrian users.



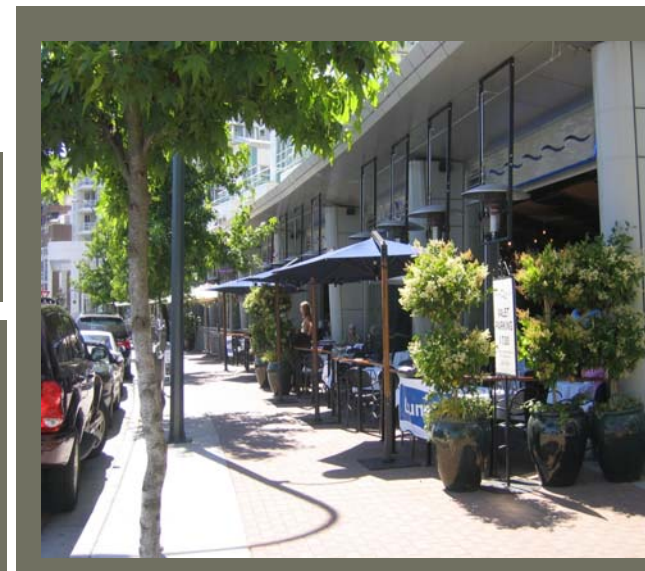
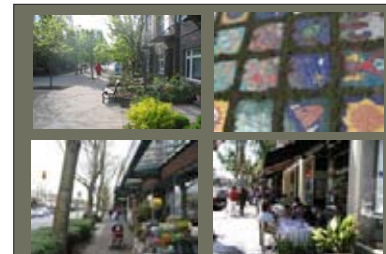
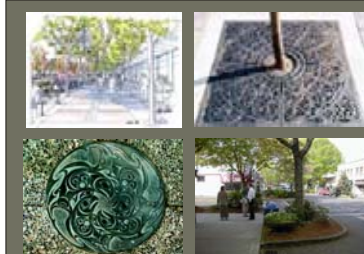
Unified public realm treatments can help create a local shopping precinct identity.

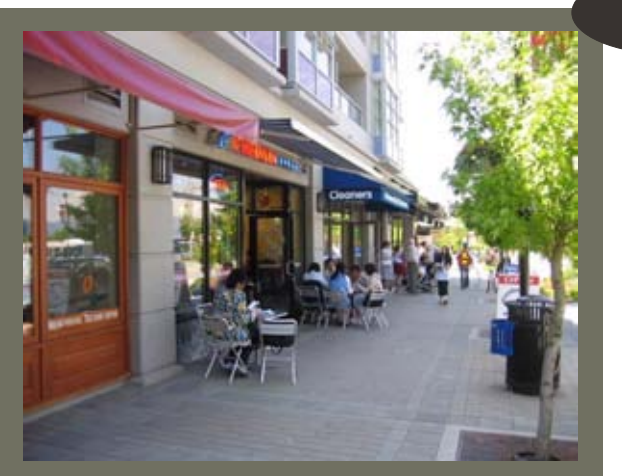
The sidewalks can be improved by introducing elements such as:

- better pavement treatment
- pedestrian scaled lamp standards
- tree grates
- street furniture
- "greener" street edge
- enhanced street sign design
- flower baskets and banners




New trees should be added where appropriate to the existing Cambie Street boulevard, with an aim to improve the health and "green-ness" of the landscaped median and an improved public realm.





The Cambie street frontage of Oakridge Centre should be lined with neighbourhood serving shops, services, and restaurants that are oriented to the street to animate it and promote pedestrian interest and safety.



<p><b>Cambie Street Today</b></p> 	<p><b>Cambie Street Improved</b></p> 
	



Buildings and sidewalks should also provide opportunities for:

- Bicycle parking
- sidewalk cafes
- the sale of flowers and produce etc. which provide pedestrian interest by spilling out of the buildings onto the sidewalk.

Urban design of new buildings should reinforce a pedestrian friendly environment through careful attention to such elements as:

- Storefront windows
- Weather protection
- Setbacks and entrances

