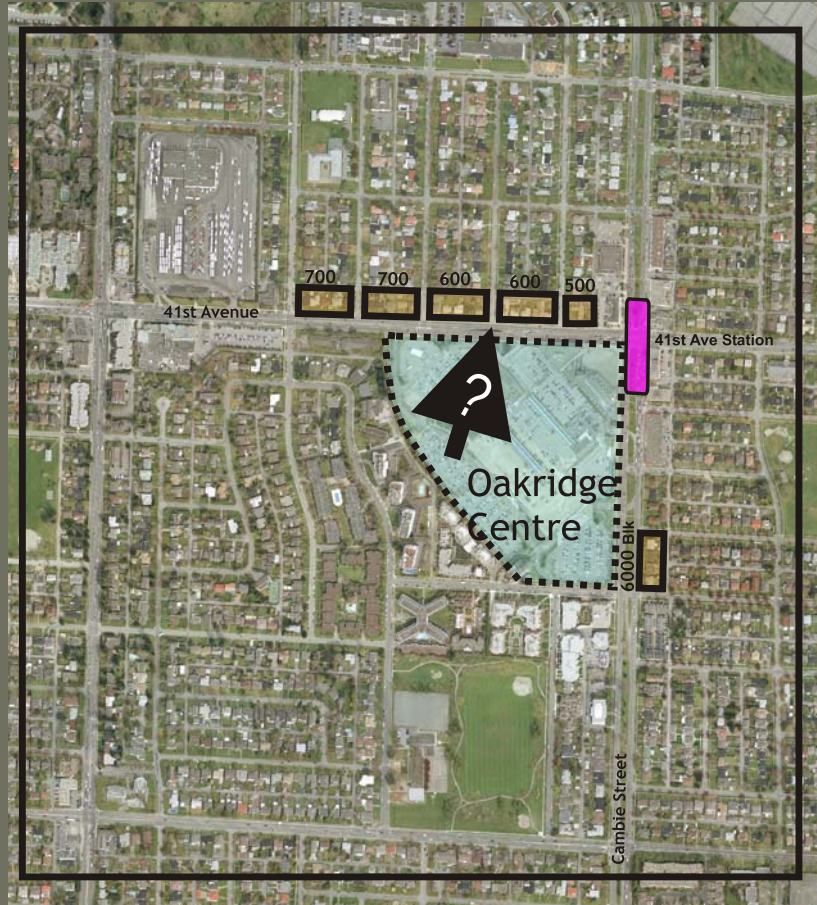


Oakridge Station Area Study - North of 41st Avenue & 6000 Blk Cambie



7



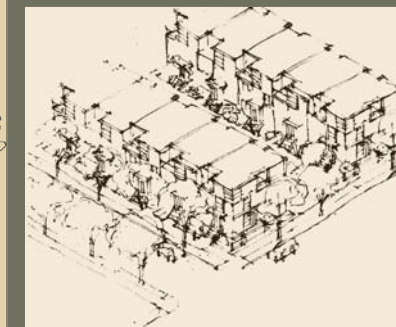
EXISTING POLICY

The 1995 Oakridge Langara Policy Statement states that in the event of a rapid transit link to Richmond, the areas around station locations should be re-evaluated to determine whether sites should be considered for changes in land use and/or density.

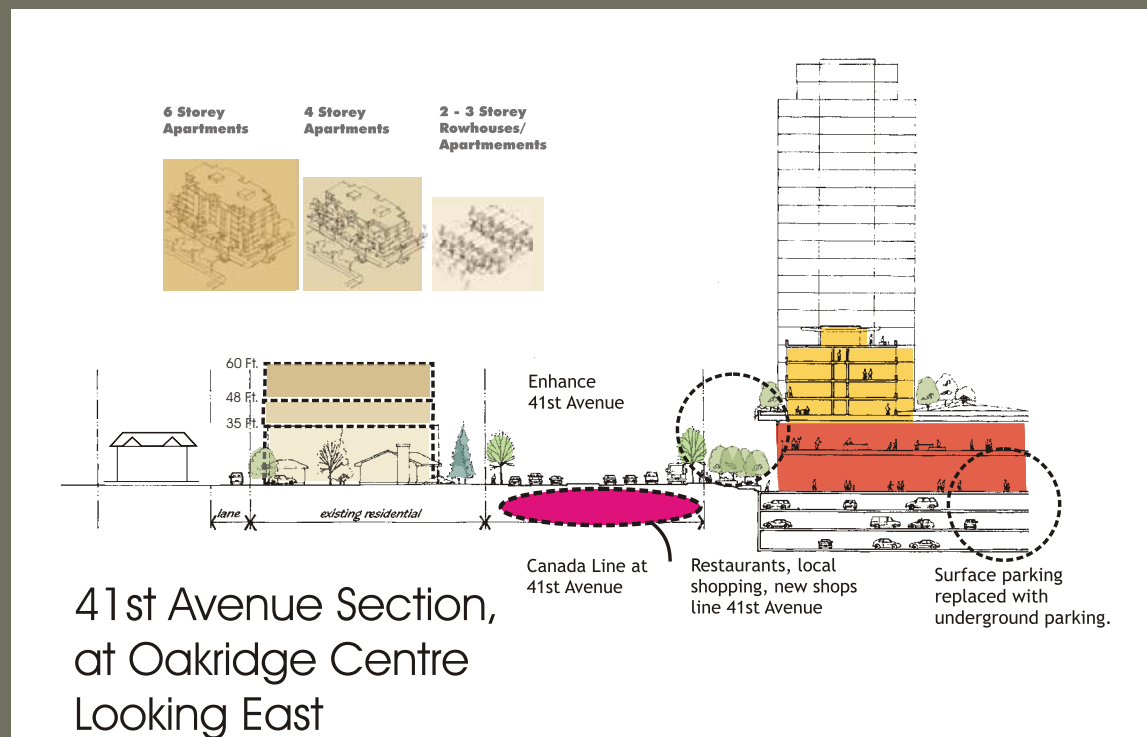
The 2005 Riley Park South Cambie Community Vision supports the creation of a Mixed Use Neighbourhood Centre at 41st and Cambie by providing opportunities for more housing at this key location. Additional housing would:

- bring people closer to where they shop or work
- help support local shops and services,
- increase ridership on rapid transit.

The 2005 Riley Park South Cambie Community Vision supports some small developments designed for seniors (e.g. assisted-living facilities with various levels of care) near parks, shopping, transit, services, to allow seniors to stay in the community as their housing needs change.



TELL US WHAT YOU THINK



	Support 6 storey apartment buildings	Support 4 storey apartment buildings	Support 2-3 storey rowhomes/apartments	None (No change)
500 Block W. 41st				
600 Blocks W. 41st				
700 Blocks W. 41st				
6000 Block Cambie				

