

Parking on Arterials



Arterial Streets

There are often parking or stopping restrictions on arterial streets, especially during rush periods.

On some arterials, particularly shopping streets, there may be parking time limits. Sometimes these are accompanied by parking meters to discourage all-day parking, freeing-up parking spaces for visitors, customers of local businesses, and clients of local service providers.

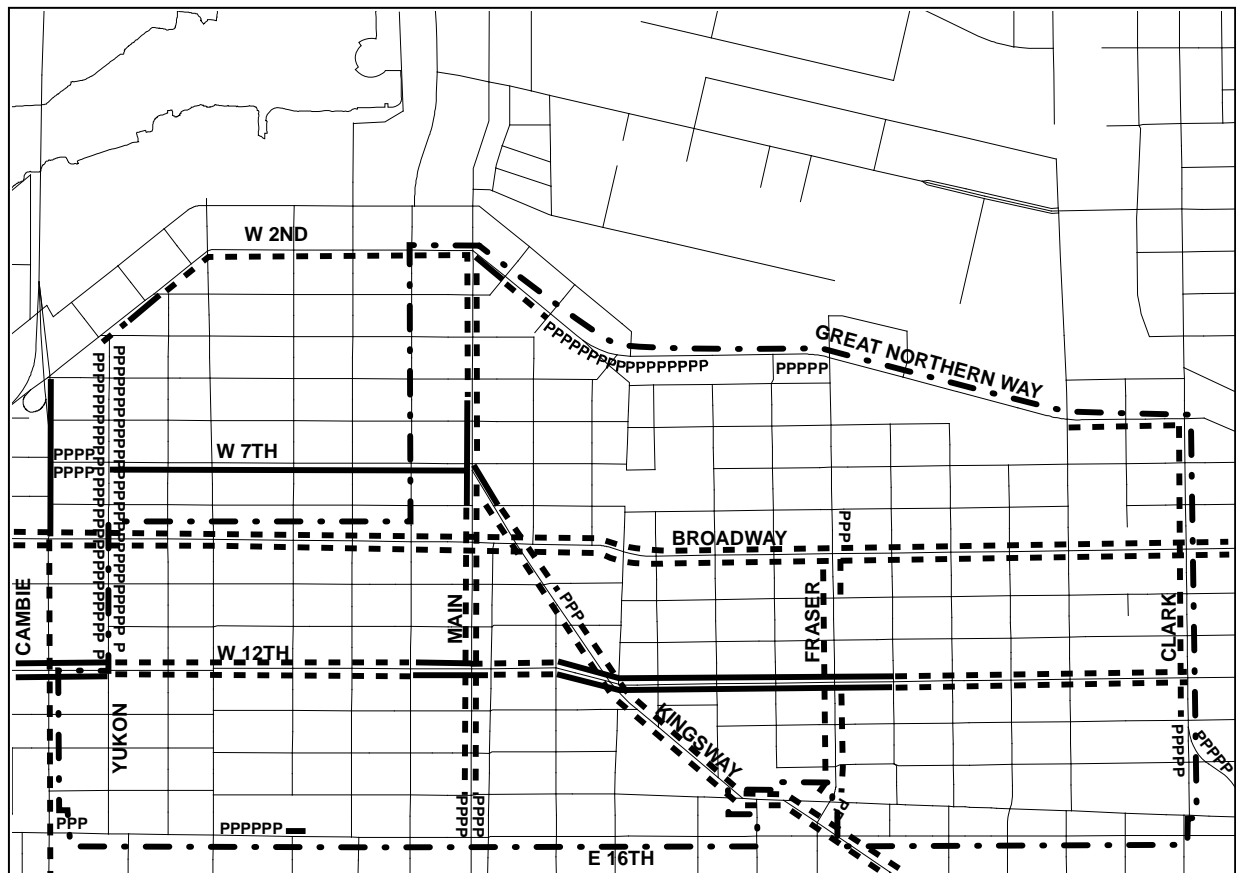
Arterial Streets in Mount Pleasant

The on-street parking restrictions in Mount Pleasant are shown on the map below.

The parking restrictions vary on arterial streets. Broadway, Clark, Main, Kingsway, 2nd Ave., and Fraser (south of Broadway) have parking restricted at least during rush periods and time limited parking outside of rush

periods. Cambie Street and 12th Avenue have rush period restrictions and full time restrictions for part of their lengths. Other arterials have few or no parking restrictions.

Source:
City of Vancouver
Engineering Services



- - - Rush period restrictions
- Full time restrictions
- PPPPP Parking time limit

- . - Community Plan Area boundary