

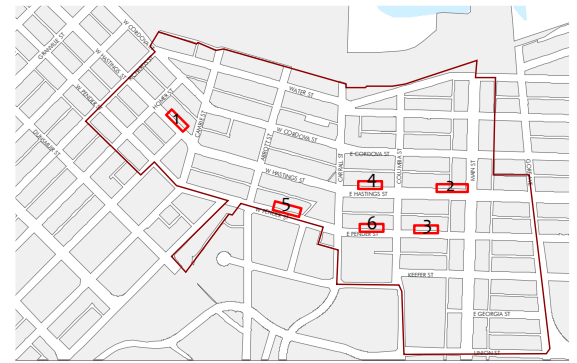
# Understanding the Area

## Current Building Scale: General Height

A neighbourhood's scale, or built form, is determined and regulated by the Zoning & Development Bylaw which establishes maximum building heights and densities allowed throughout the city. In the Historic Area, established buildings are at various heights, some below and some above the zoning maximums. The result is a varied low to mid-rise neighbourhood scale, or overall General Height.

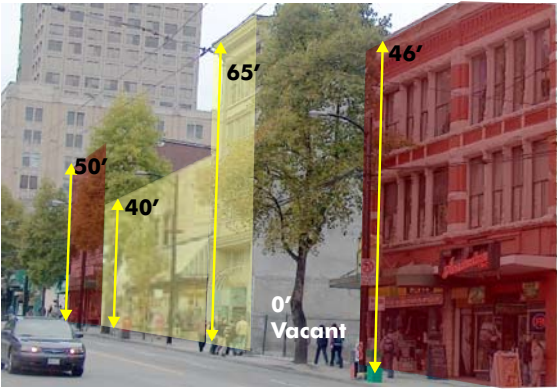
Examples of the General Height in the Historic Area are shown below.

- ↑ Building Height (Feet)
- Heritage Buildings
- Newer Buildings
- Older, Non-heritage Buildings

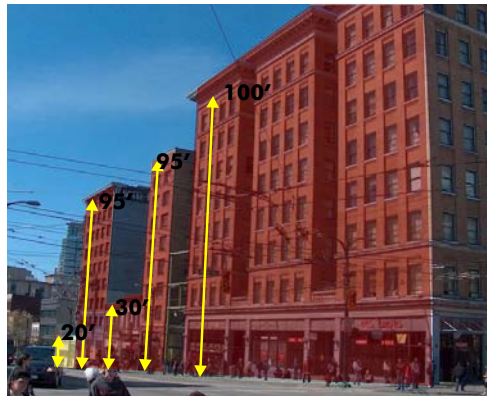


Location Key

## Older General Height Buildings



1. 400 Block W Hastings

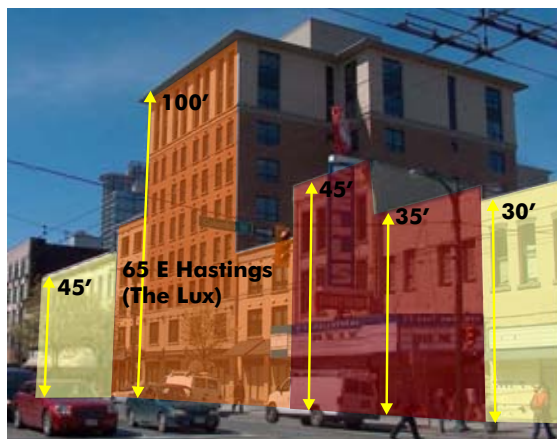


2. 100 Block E Hastings

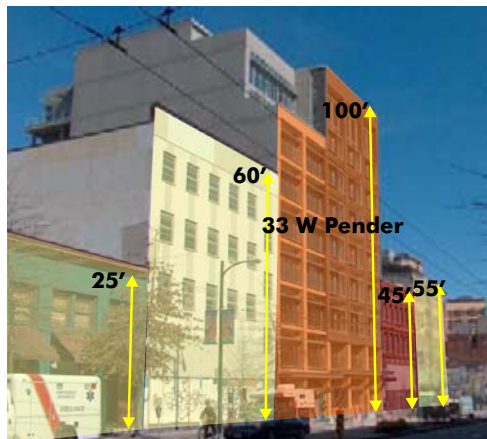


3. 100 Block E Pender

## Newer General Height Buildings



4. O Block E Hastings



5. O Block W Pender



6. O Block E Pender

