

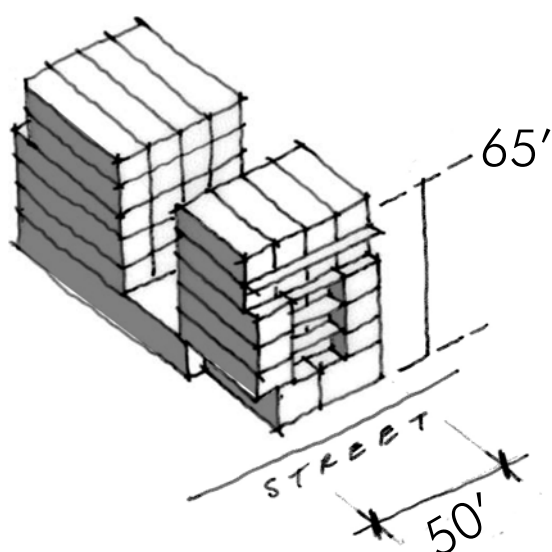
# General Height

## Possible Forms of Development

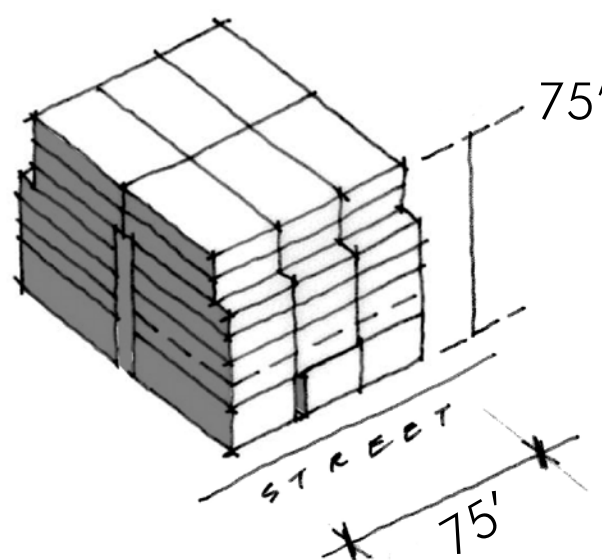
The development of new buildings in the Historic Area can take place in various ways. The form of development, or size and shape of a building, will depend greatly on the site area, its surrounding context, as well as Zoning, Design Guidelines, and other related policies.

Buildings taller than 120 feet require a larger site area (minimum 75 feet of street frontage), and could have a greater impact on neighbourhood scale. For this reason, increases to General Height are only explored up to 120 feet. Buildings taller than 120 feet are considered as part of the exploration of Special Sites.

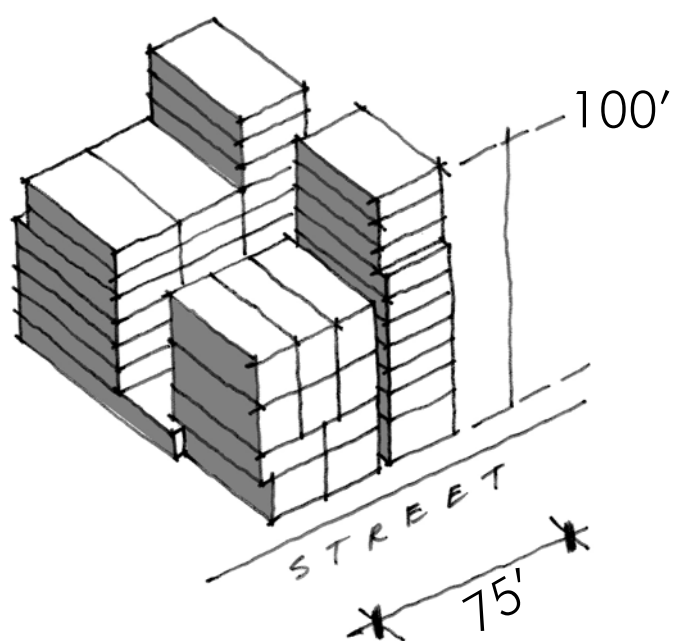
The illustrations below show possible forms of development at various heights that could be compatible with, and complimentary to, the scale and character of the Historic Area.



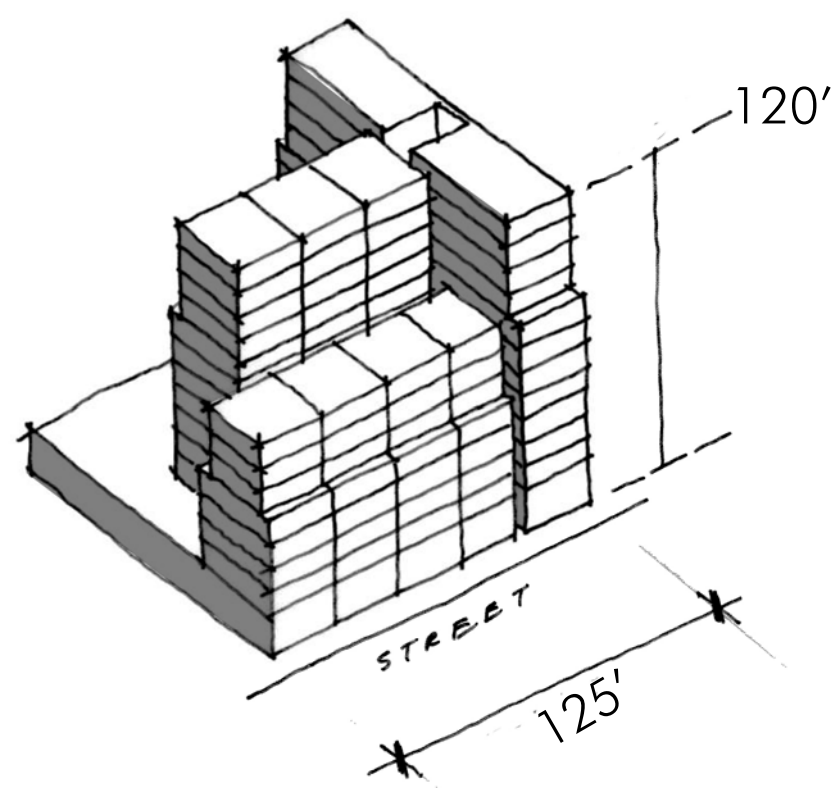
50-65' height



75' height



100' height



120' height

