

# Southeast False Creek (SEFC) City Lands Official Development Plan (ODP) Proposal

## Park Forum - May 31, 2003

GENERAL THEMES  
Staff Summary

The public was invited to a Park Forum workshop on May 31st to provide a critique/review of the City Lands Official Development Plan Proposal. The summary below is the general themes taken from the session, derived from the 42 comment sheets submitted, and the reporting out summaries of the workshop groups.

### AREAS OF SUPPORT

Majority support was expressed for all the park planning principles outlined in the comment sheets and the aspects of the Proposal that supports them:

- That the SEFC park has to be a park for many people, including:
  - A neighbourhood park for new residents,
  - A community park for all of Mt. Pleasant, and
  - A citywide waterfront park for everybody else.
- The park stretches along the entire waterfront of the site, and celebrates water.
  - One long, continuous park along the water is proposed, with 'green fingers' reaching toward the existing neighbourhoods. Rainwater will collect in swales leading to a row of ponds that clean the water before releasing it into False Creek. The wetland is also wildlife habitat and a scenic park amenity for people.
- The park may be more natural, less manicured, even wild:
  - less mowed lawn and no flower beds, instead a more diverse environment with many types of habitat, including a naturalized shoreline, creeks and wetlands, shrubs and trees offering foraging and shelter to birds, more native plants, grassland with taller grasses.
- The park will be a place for communal activities:
  - this could include a demonstration garden teaching high-rise food growing, a school garden for outdoor ecology and school economics classes, fruit trees and berry shrubs under the care of a neighbourhood group sprinkled throughout, and paved areas for farmer's markets and Christmas tree sales.
- The park has to have a balance of many different athletic uses.
  - The elementary school requires a playing field, in addition there could be hard surface sports courts under the bridge, facilities for non-motorized boating, walkways and bike paths.
  - Support for park allocation (26.4 acres)
  - Support for 'Green Fingers' or green north-south streets reaching into surrounding neighbourhoods
  - Support for water features and innovative use of water. Support for the Proposal's sustainable concepts for stormwater and rain water management.
  - Support for Urban Agriculture/community garden in the park.
  - Support for a non-motorized boating facility.

### CONSIDERATIONS FOR CHANGE

#### Park Footprint



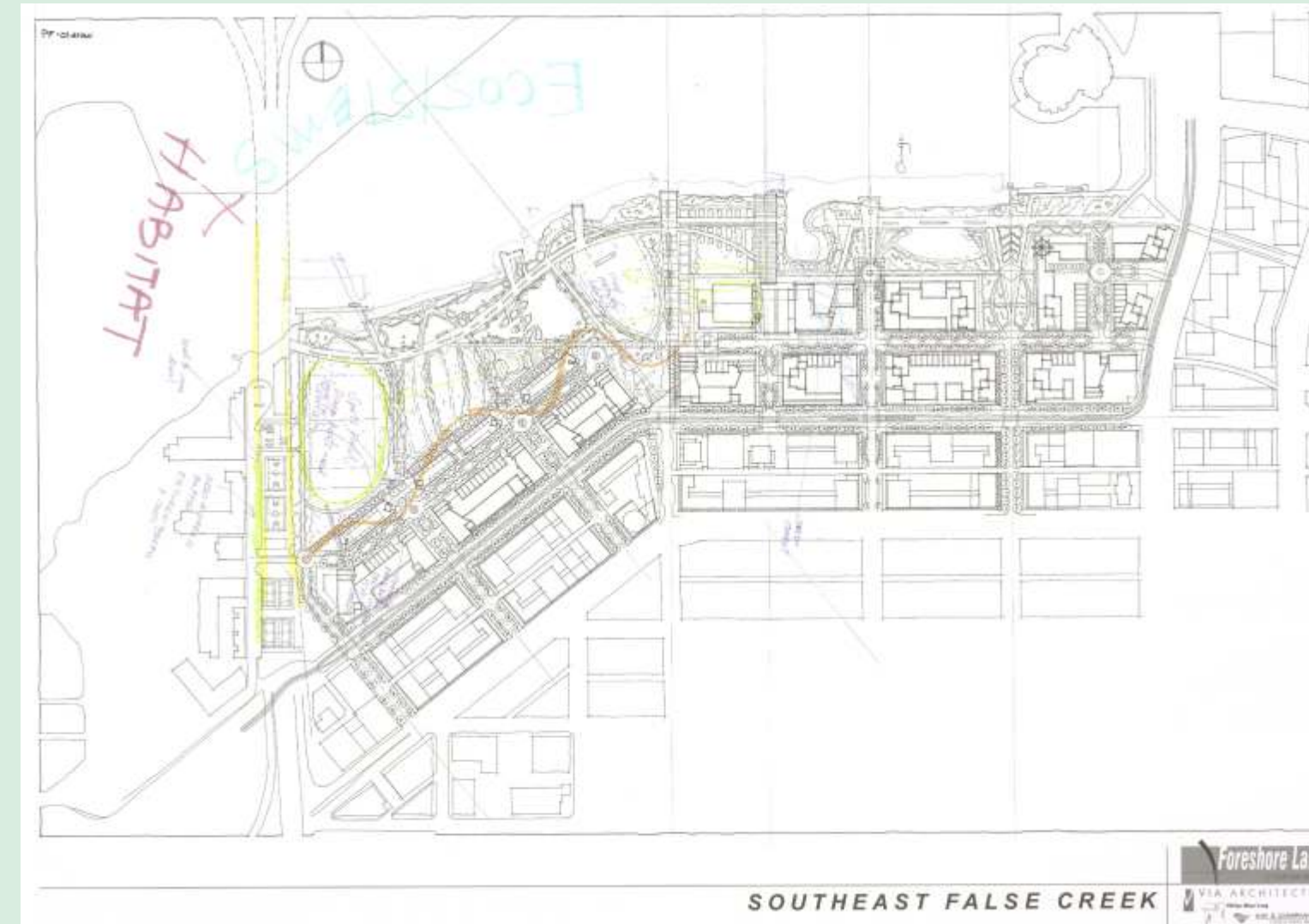
##### Critique:

- Although appreciation for the park allocation (26.4 acres) and 'Green Fingers' of landscaped north-south streets in the Proposal, more could be done to integrate green spaces into the surround.

##### Suggestions:

- Bring 'Green Fingers' further into the south area
- Keep park allocation, but decentralize the large park space in the west.
- Consider more green space for eastern area, given high density development sites.
- Better integrate buildings, water, and park edges.
- Consider increasing the park allocation (minority view).

#### Ecosystems, Habitat, Biodiversity



##### Critique:

- The Proposal could go further in making habitat and biodiversity the focus of park space.

##### Suggestions:

- Consider making the programming of the park more basic, with an emphasis on creating places for nature, encouraging habitat and biodiversity.
- The focus should be on eco-systems, and using ecosystems to support design (i.e. re-establishment of foreshore for wildlife).

#### Heritage

##### Critique:

- The park design and proposal should do more to retain the heritage on the site and the heritage context.

##### Suggestions:

- Conduct a thorough heritage inventory of the site. Evaluate and consider retaining some of the works yard buildings not currently slated for retention, including the saw-tooth building and the 1920s brick building and consider their re-use in the park or the development (i.e. dragon boat use, as a terminal for roller rink and kids play area)
- Consider retaining heritage buildings in their existing location.
- Ensure that the public realm design maintains some sense of continuity with the past uses of the site. Consider historical signage, having old-timers who worked on the site telling stories from the past and incorporating in an audio way into the public realm.
- Consider marking the footprints of the structures that no longer exist i.e. Cannon Building.

#### Absent Programming

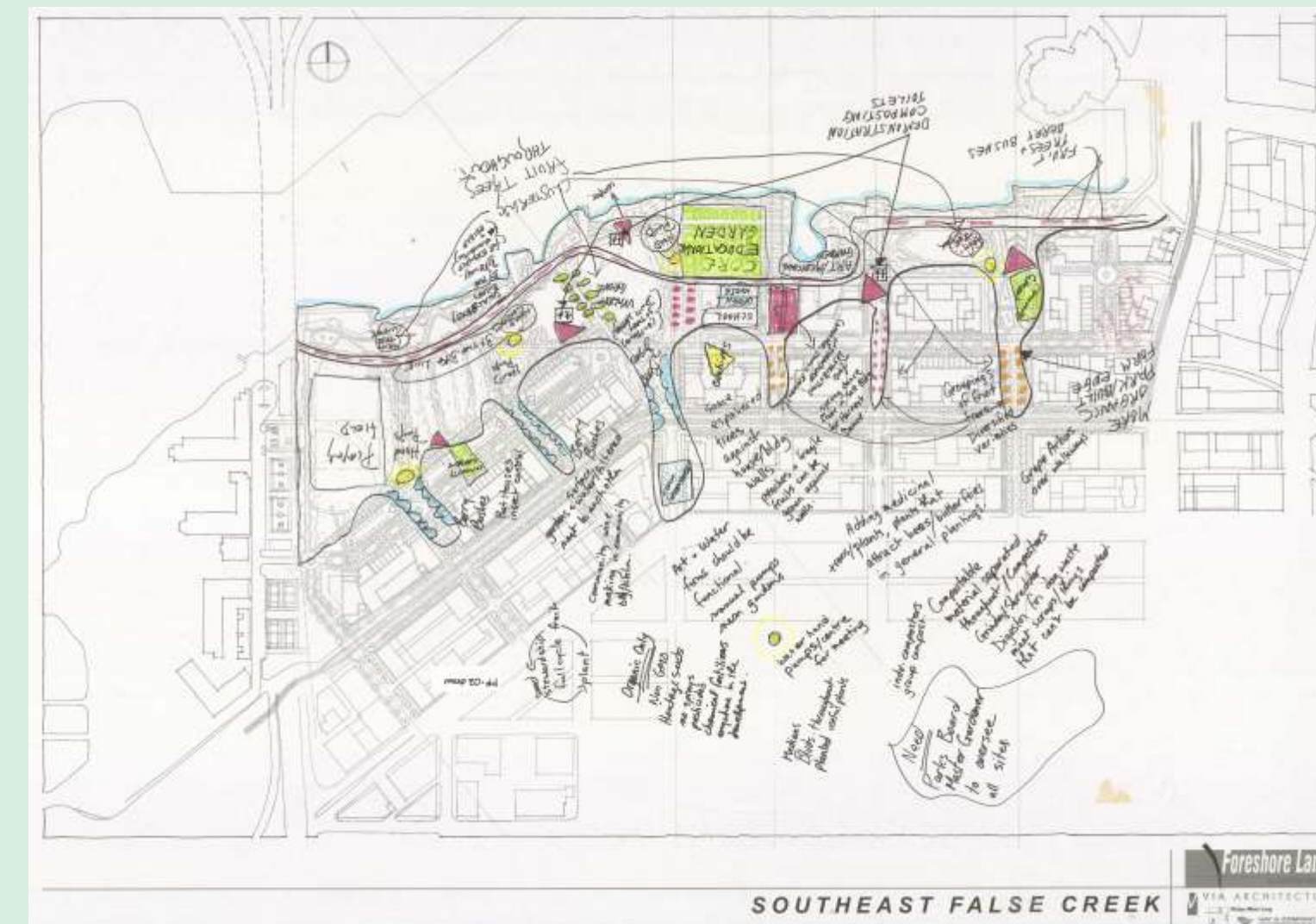
##### Critique:

- The Proposal tries to accommodate a wide variety of activities, but misses some important ones, especially related to youth culture and activities.

##### Suggestions:

- Incorporate facilities or spaces for popular youth activities into the programming for the parks--skateboarding, bmx biking, roller activity.
- Explore possibilities of designing facilities for shared or flexible uses. Consider designing activity areas that can change with the seasons i.e. integrating a pool used for swimming in summer and skating in the winter.
- Consider facilities like basketball courts and skateboarding facilities under the bridge structure to protect from rain.

#### Urban Agriculture



##### Critique:

- The Proposal could go further in terms of Urban Agriculture/Community Gardens.

##### Suggestions:

- Consider expansion of community gardens to allow for food production.
- Consider the question of stewardship of the community gardens, i.e. have someone to oversee (master gardener)
- Consider integrating community green houses on the site that would have an educational value.

#### Water

##### Critique:

- Water management of the Proposal is supported, i.e. creation of ponds, and capture and natural treatment of water before release into the creek. However, subsequent design should go further to ensure that designs are artful, sustainable, and allow people to interact water.

##### Suggestions:

- Consider using the tides of the creek for a shoreline feature.
- Ensure that water management is sustainable, i.e. that slopes and grades are used for water drainage and water features are designed without the use of chemicals.
- Integrate art in water treatment.
- Allow people of all ages to interact with the water.

\* The purpose of these summary boards is to report what the public has said in the various forums for the SEFC ODP Proposal. The Proponent is to respond in the Fall 2003 by addressing the comments through changes in the plan or by giving a rationale as to why suggested changes can not be incorporated

## Non-Motorized Boating

### Critique:

- Appreciation for the Proposal suggesting the development of a non-motorized boating facility, however the size and purpose of the facility should be considered.

### Suggestions:

- Consider a facility of substantial size (15,000 sq. ft. +) that caters to many different non-motorized boating groups with change rooms, boat related retail, food service, cleaning, repairs, and storage.
- Locate the facility close to water with launch ramp, wharfs, and piers.

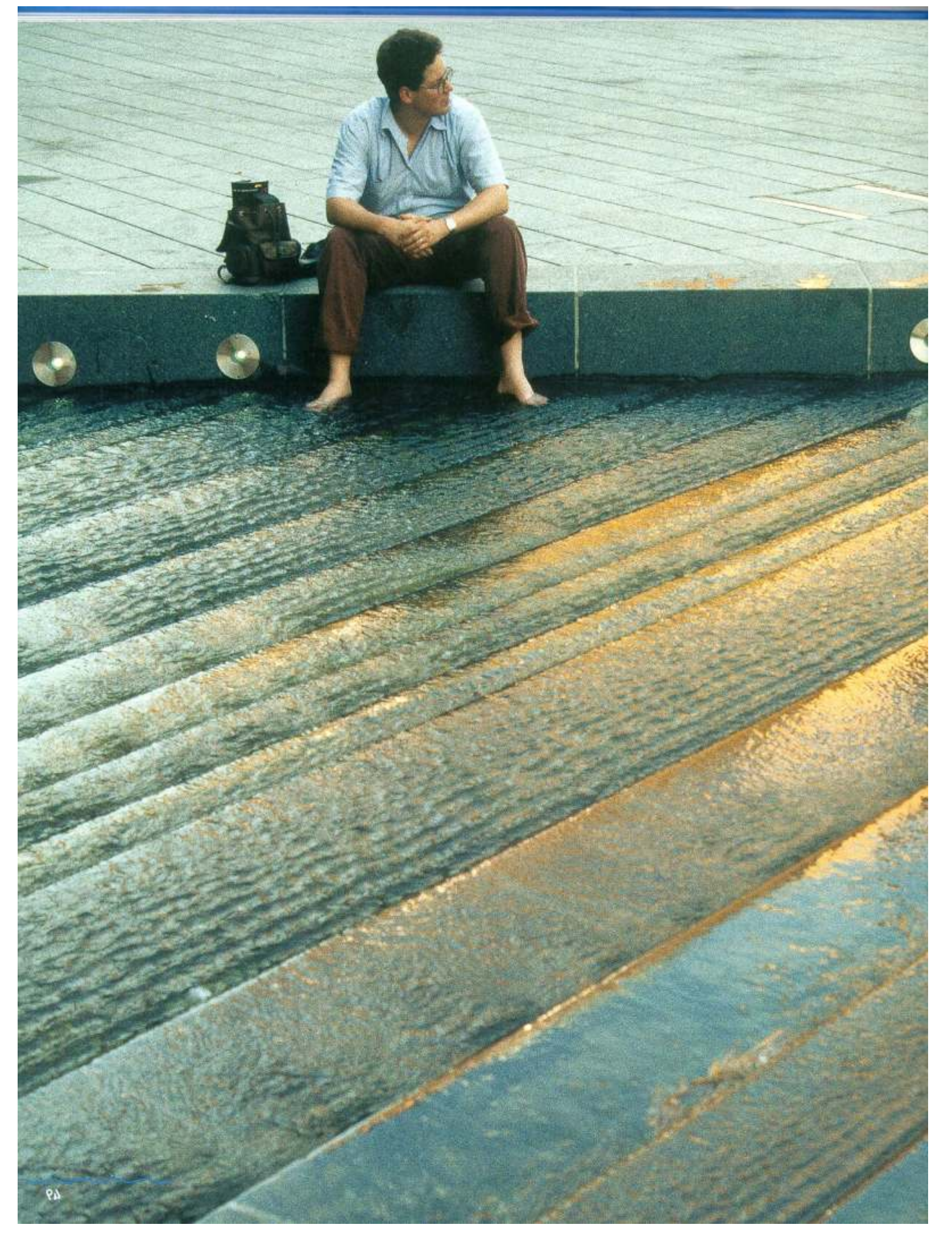
## Sports Fields

### Critique:

- While there appears to be general acceptance of a sports field on the site, there was divided discussion about limiting any expansion of playing fields in the proposal. While some felt there should be more playing fields, the majority of comments made in the comment sheets noted that there are adequate sports fields downtown, and that there should not be any more on this site, considering the different programming needs.

### Suggestions:

- No more than one grassed playing field in the park.
- View that fields and tennis courts not as important as other programming needs.
- No soccer, rugby fields.



Source: "Waterscapes" by Herbert Dreiseitl



\* The purpose of these summary boards is to report what the public has said in the various forums for the SEFC ODP Proposal. The Proponent is to respond in the Fall 2003 by addressing the comments through changes in the plan or by giving a rationale as to why suggested changes can not be incorporated